

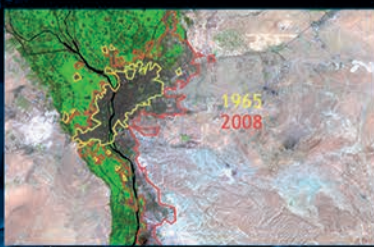
# 10 YEARS OF IMAGING AFRICA SPOT VEGETATION



#### Water Scarcity

In arid and semi-arid areas, 500 million people face frequent water shortages, causing health problems and hampering economic development.

© 2005-2008 Portrait of the Earth.



#### Population Boom

The annual demographic growth in Africa — twice as high as the world average — goes hand in hand with an explosive urbanization and poor living conditions.

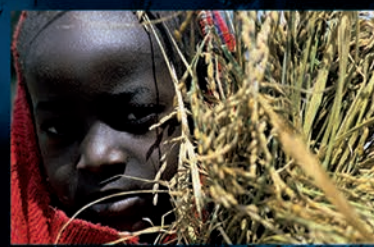
Caro's expansion seen by Landsat and MODIS. Source: USGS, FAO.



#### The encroaching Desert

Drylands unsuitable for sustainable agriculture cover 42% of Africa. In addition, desertification threatens another 15% of the continent.

Source: www.maualania.gov.com



#### Food Security

Despite many efforts to fight difficult conditions in sub-Saharan Africa, 200 million people still suffer from malnutrition.

© Ray Welby/World Bank



#### The uprooted Legions

In addition to the more than 8 million people who are running from political turmoil, ethnic strife and war, many more Africans are ecological refugees.

Darfur: refugee camp in Chad. Source: www.supportdarfur.com



This unique image is a composite of all daily images recorded for 10 years by the VEGETATION instruments on board satellites SPOT-4 and SPOT-5. The bathymetry is derived from the Blue Marble next generation. Capitals and other major cities (> 5 million inhabitants) are shown. More info: <http://eoedu.belspo.be/vgt10>

Copyright © UCL - Geomatics (Belgium) 2013



Prepared by C. Mailier, E. Van Bogaert, M. Alarcon and P. Defourny  
Université catholique de Louvain (UCL-ELI / Geomatics)