



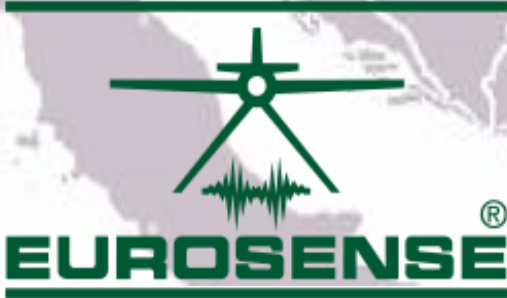
**Your Partner in
Geo Information Services**

Remote Sensing Applications Department

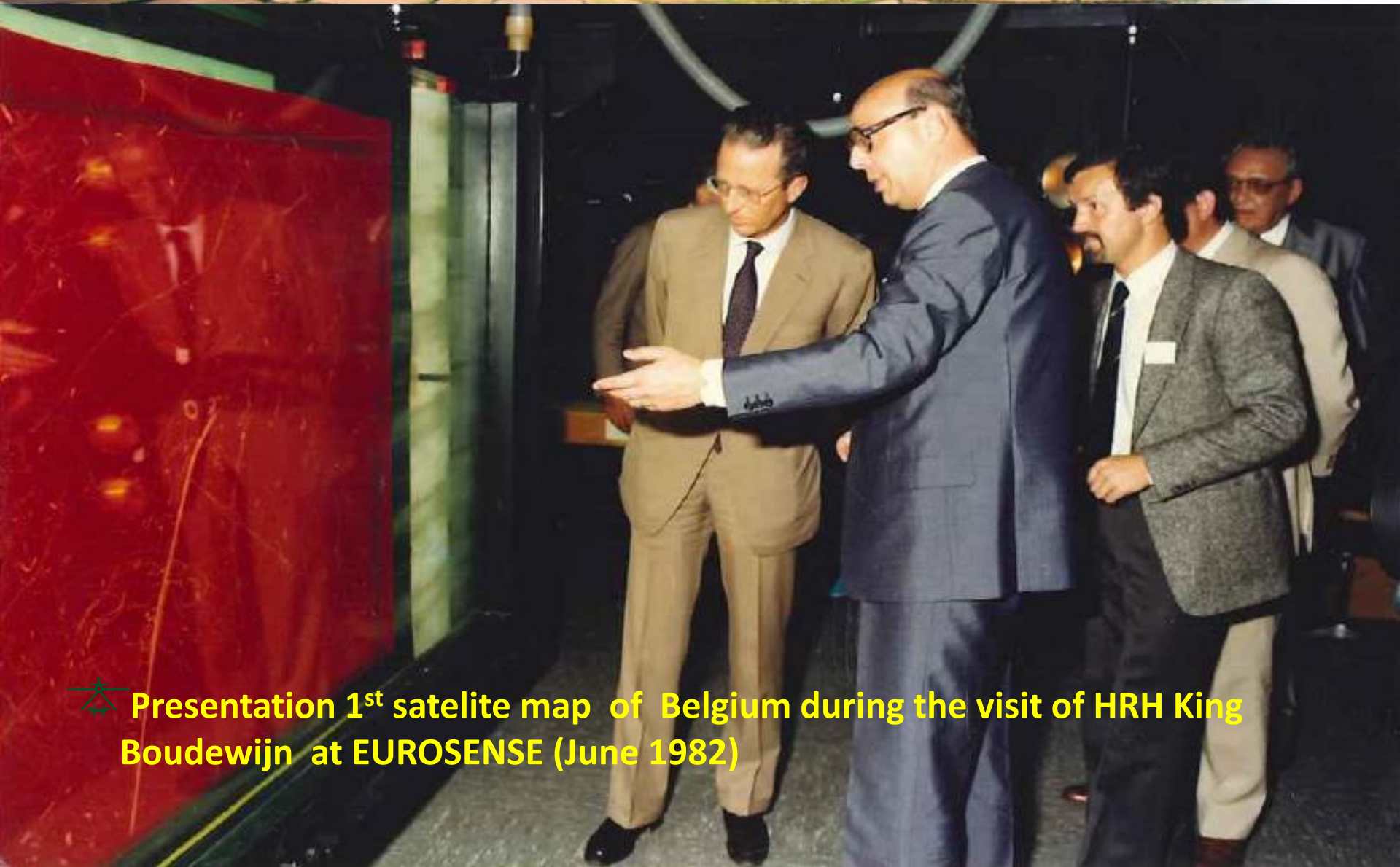





EUROSENSE OFFICES



Milestones



 **Presentation 1st satellite map of Belgium during the visit of HRH King Boudewijn at EUROSENSE (June 1982)**

Skills offered & sought



Land

- Land management (e.g. urban planning, brownfield management)
- Follow up Land-use trends (e.g. Urban sprawl monitoring, soil sealing)
- Change mapping + creation of change statistics

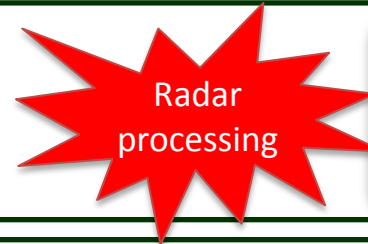
=> Previous FP7 project: **GEOLAND**



Forest mapping

- Monitoring deforestation and degradation
- REDD (Carbon monitoring)

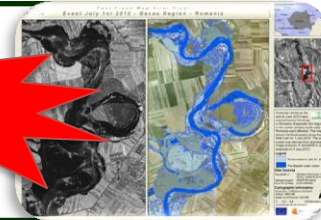
=> Previous FP7 project: **REDDINESS**



Risk & Emergency

- Natural hazard (e.g. floods)/industrial risk management (Economical damage and affected population)
- Critical infrastructure monitoring
- Malaria management and control

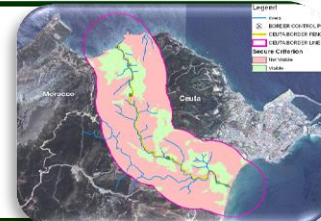
=> Previous FP7 projects: **SAFER, MALAREO**



Security

- Situation awareness (border monitoring)
- Monitoring of refugee camps
- Informal settlement detection

=> Previous FP7 projects: **WiMAAS, G-MOSAIC, G-SEXTANT**



Energy

- Anthropogenic heat loss detection
- Monitoring of nighttime light emissions
- Detection of anomalously high emissions: potential energy savings

=> Current FP7 project: **DECUMANUS**

