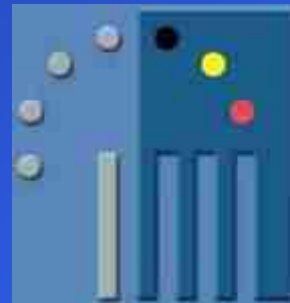


Aspects of Vegetation Monitoring in active hard coal mining areas using Imaging Spectroscopy

Airborne Imaging Spectroscopy Workshop
7th October 2005 – Bruges, Belgium



Christian Fischer

Institute for Geotechnical Engineering and Mine Surveying
Clausthal University of Technology

test site: Kirchheller Heide



DSK

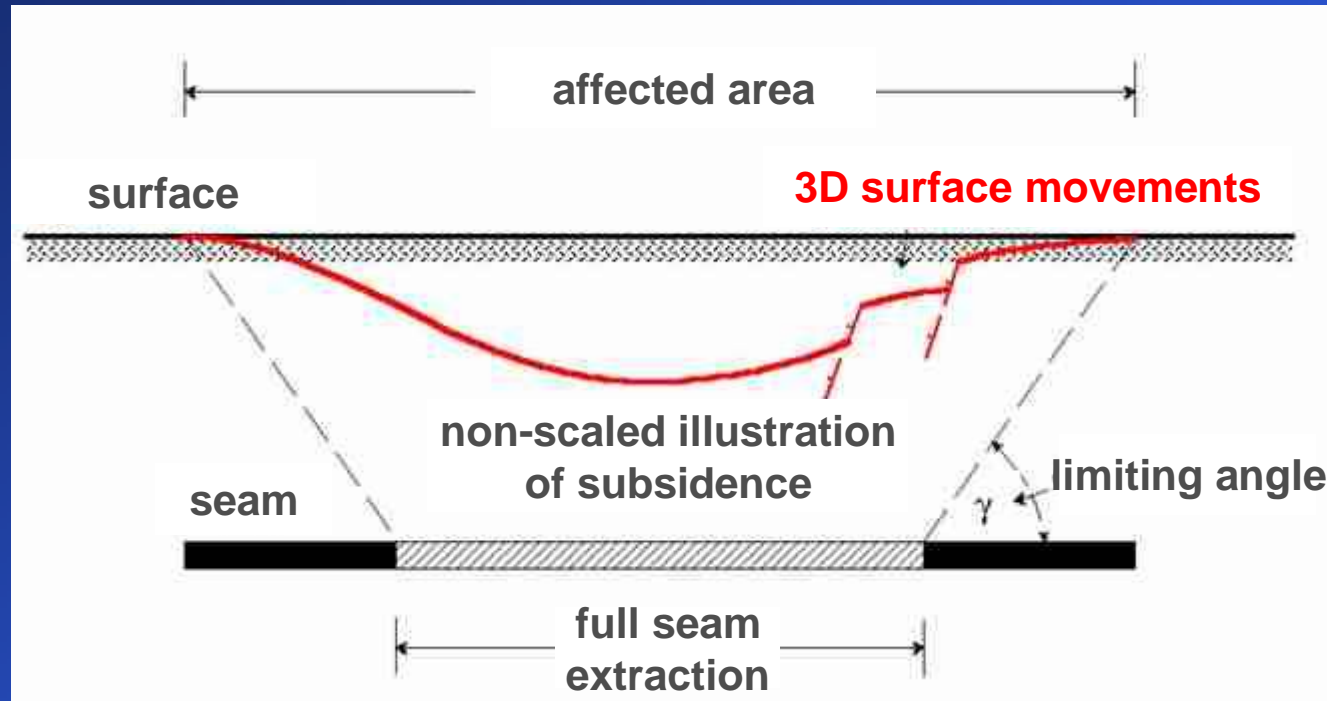


hydrological balance



Small black rectangular box with text.

DSK



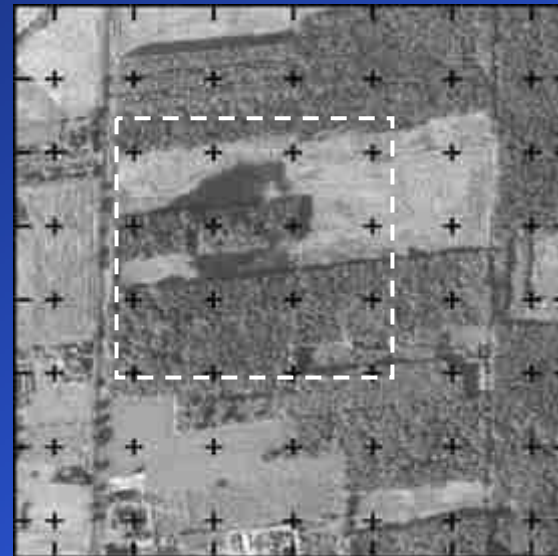
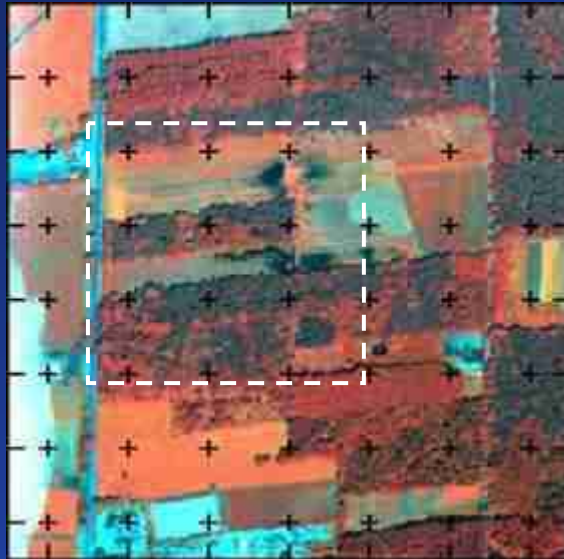
increasing distance between surface and ground-water table

decreasing distance between surface and ground-water table

environmental impacts

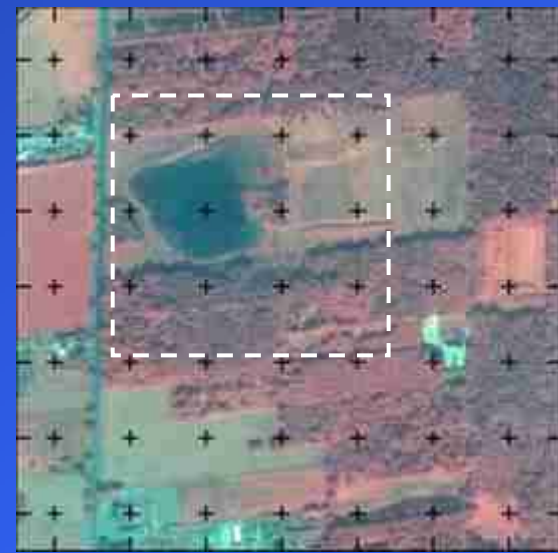
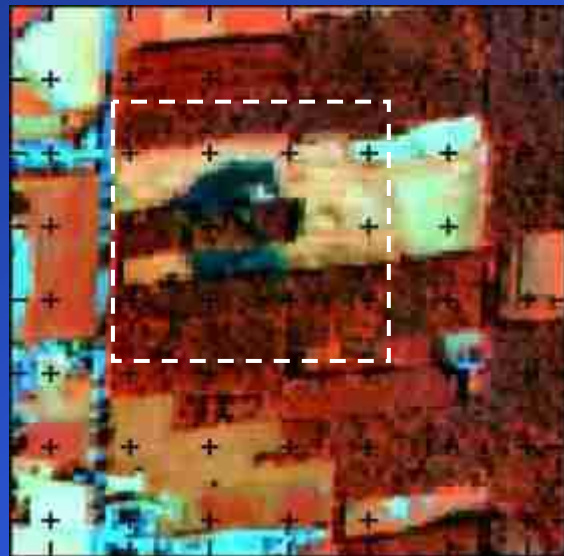


DSK



1997
DPA - CIR

1998
HRSC-A pan



2000
HyMAP - CIR

2003
IKONOS - CIR

ACKNOWLEDGEMENTS



DLR

DSK

We like to thank DLR, especially Andreas Müller, Rudolf Richter and Stefanie Holzwarth, for any assistance within the pre-processing of the HyMap™ data. We also like to thank all colleagues from DSK involved within GIS-related modelling tasks and for their assistance during the field campaigns.

Thank you for your attention