



FLOod crisis management With Earth observation Solutions

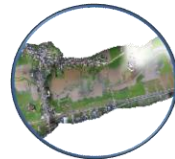
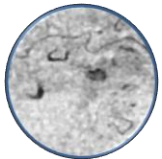
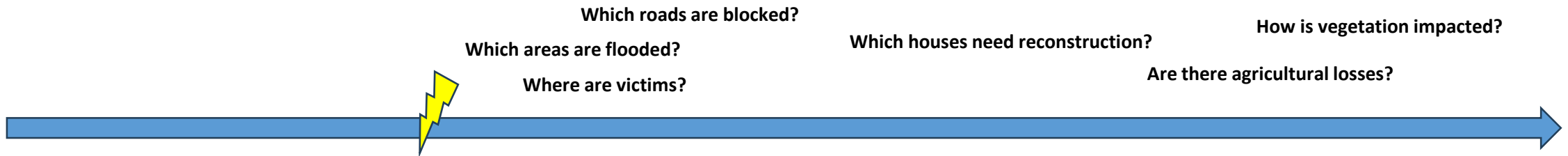


Benjamin PALMAERTS

Institut Scientifique de Service Public (ISSeP)



BEODAY 2024



...



RECOMMANDATIONS PERMETTANT D'AMÉLIORER
LA GESTION DE CRISE EN BELGIQUE

À l'attention du Ministre de l'Intérieur

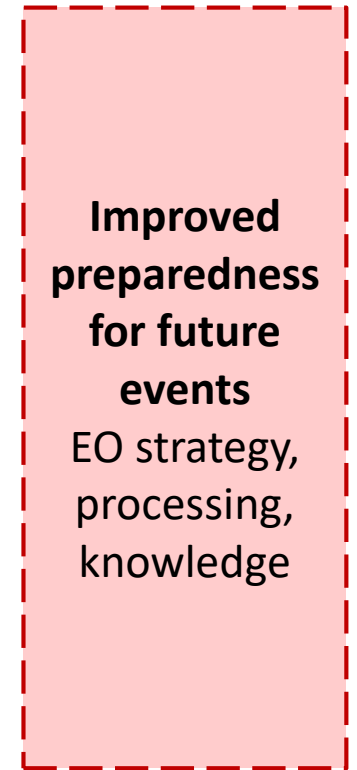
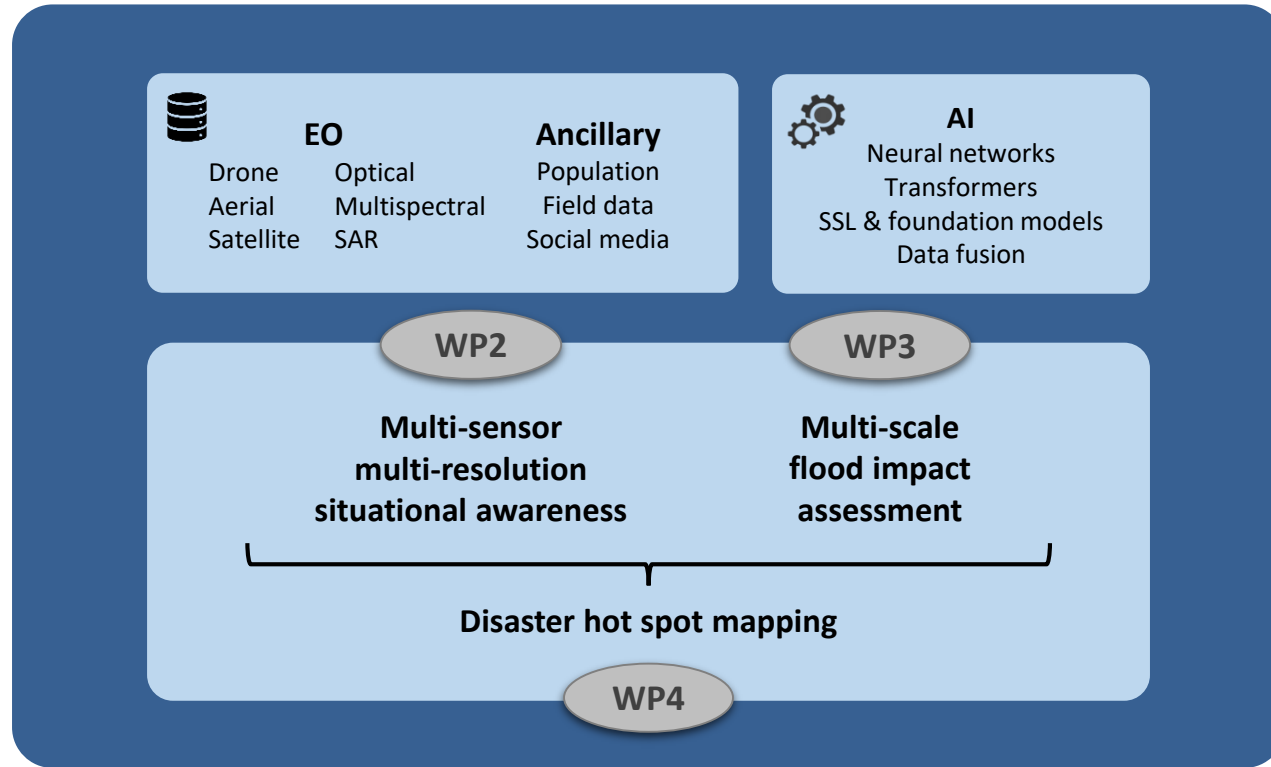
Stakeholders'
needs



EO data



Article
Here Comes the Flood, but Not Failure? Lessons to Learn after
the Heavy Rain and Pluvial Floods in Germany 2021



User-centered research



Stakeholders' needs

- Crisis managers National/regional/provincial/local levels
- Contacted organisations
 1. Services of the Governor of the Province of Namur
 2. Municipality of Liège
 3. Walloon Regional crisis centre (CRC)
 4. National Crisis Centre (NCCN, 2 pers.)
 5. Services of the Governor of the Province of West Flanders
 6. Emergency zone of Luxembourg
 7. Municipality of Trooz
 8. Services of the Governor of the Province of Liège
- Database with over 80 potential contacts
- Aftermath & reconstruction managers interviewed in a later phase

User-centered research

- 5 validated problem trees



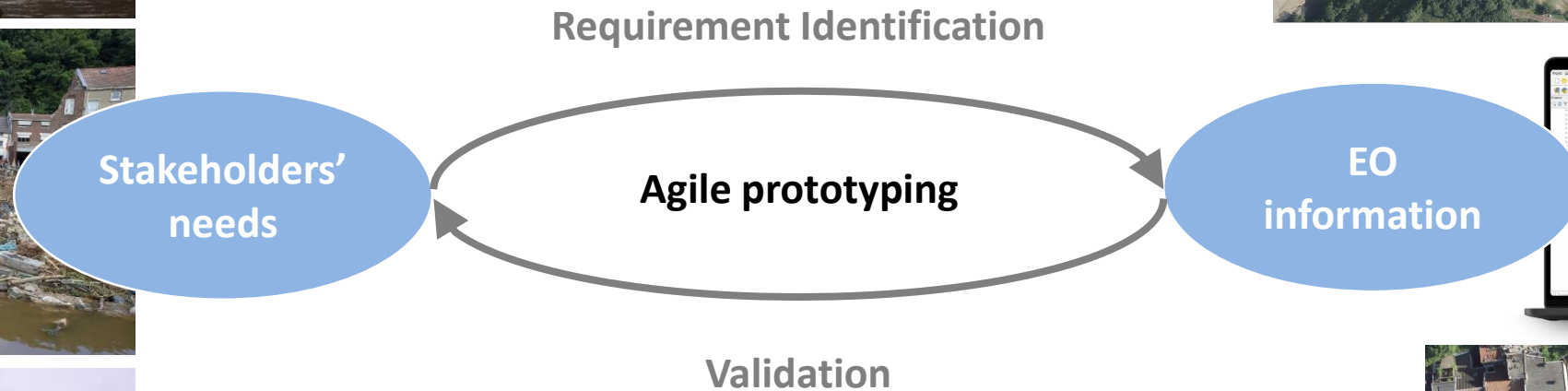
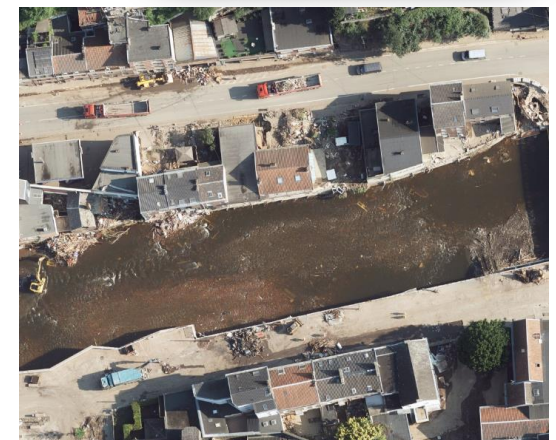
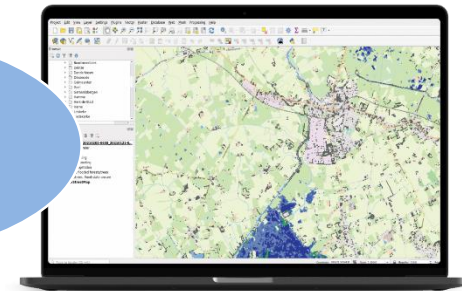
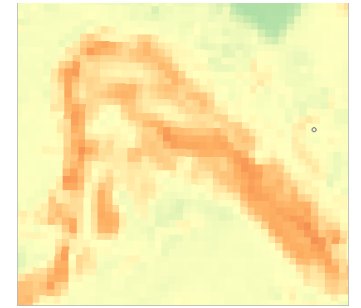
Stakeholders' needs

GouvNamur
20240328

Crisis



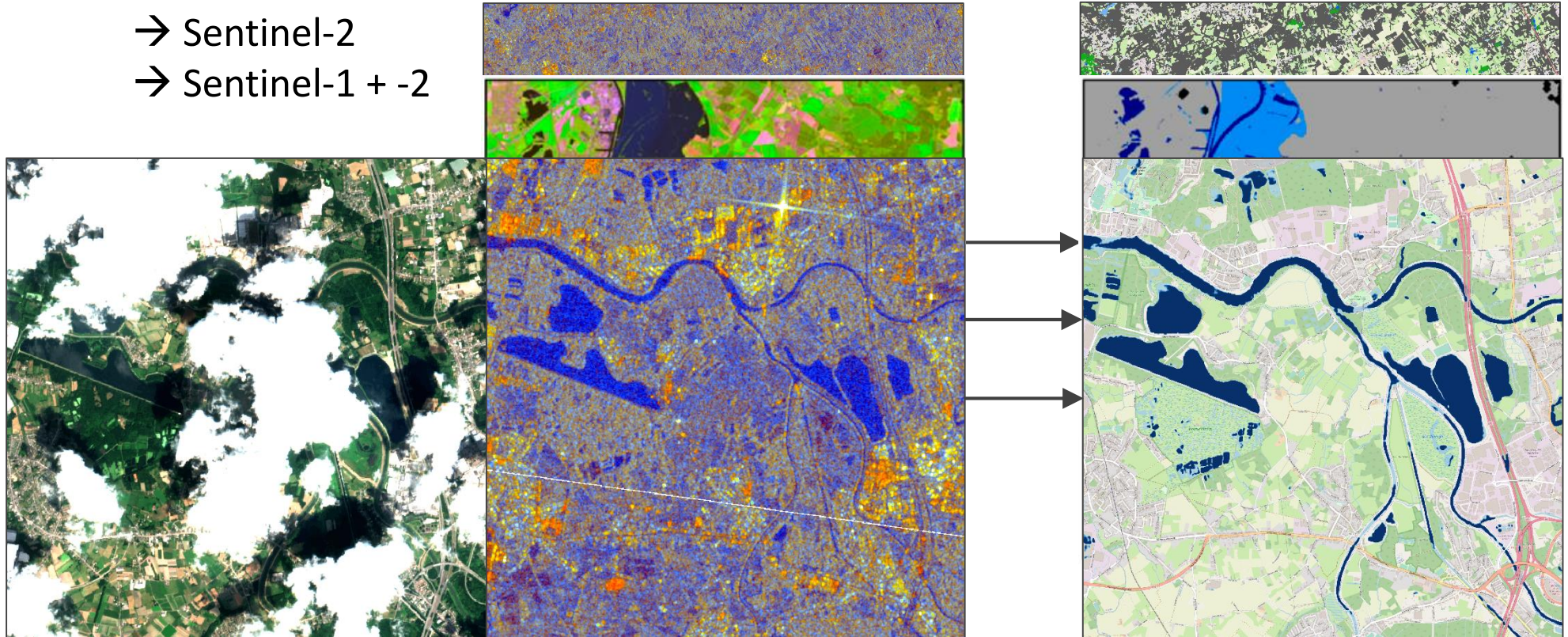
User-centered research



Fast situational awareness

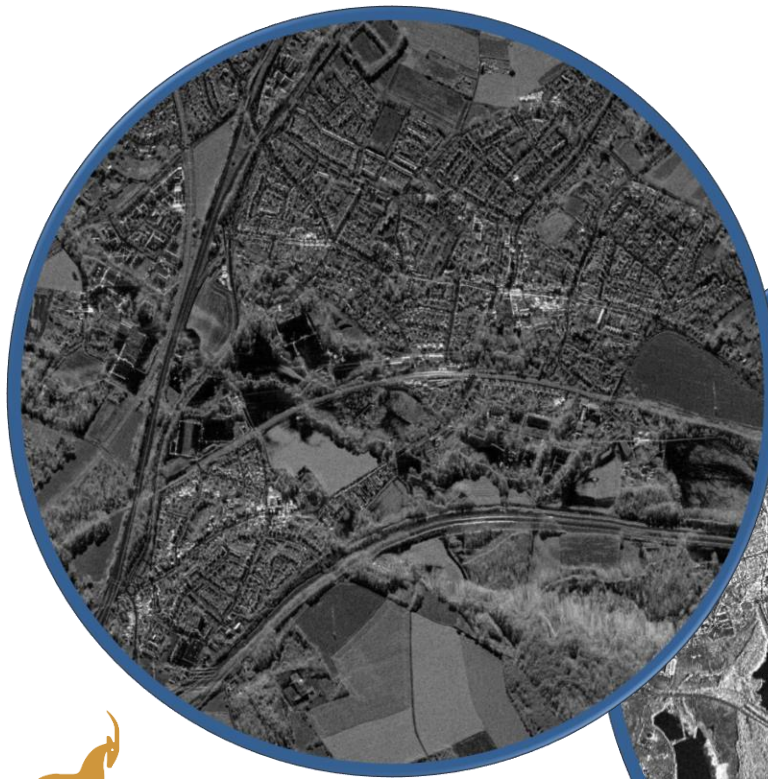
Flood extent: Build on established sensors & leverage upcoming sensors

- Sentinel-1
- Sentinel-2
- Sentinel-1 + -2

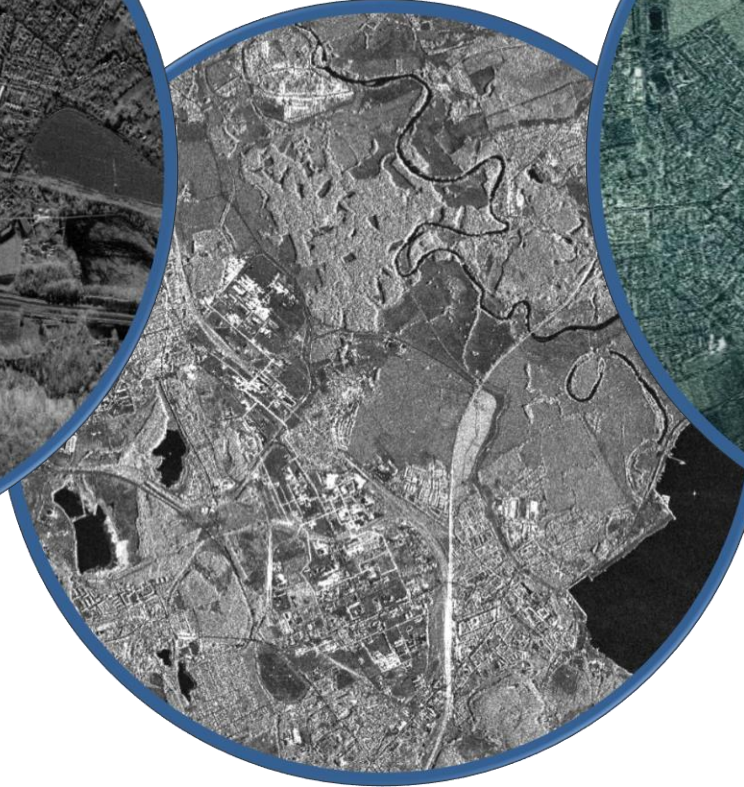


Fast situational awareness

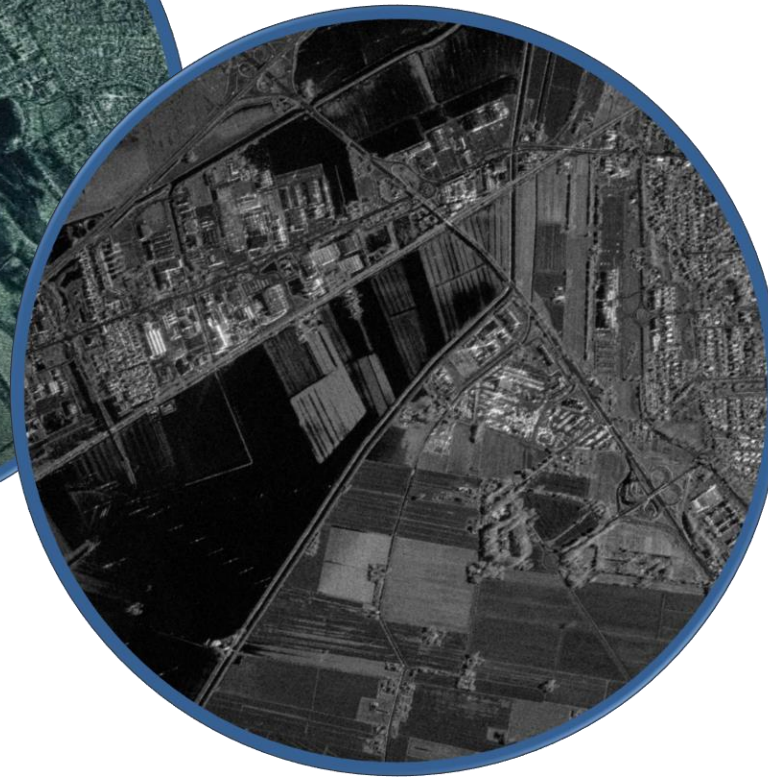
Flood extent: Build on established sensors & leverage upcoming sensors: commercial SAR



TERRA SAR X



ICEYE



Fast situational awareness

Flood extent: Build on established sensors & leverage upcoming sensors: UAV



VMM imagery



Oblique imagery

© Quentin Van Belle

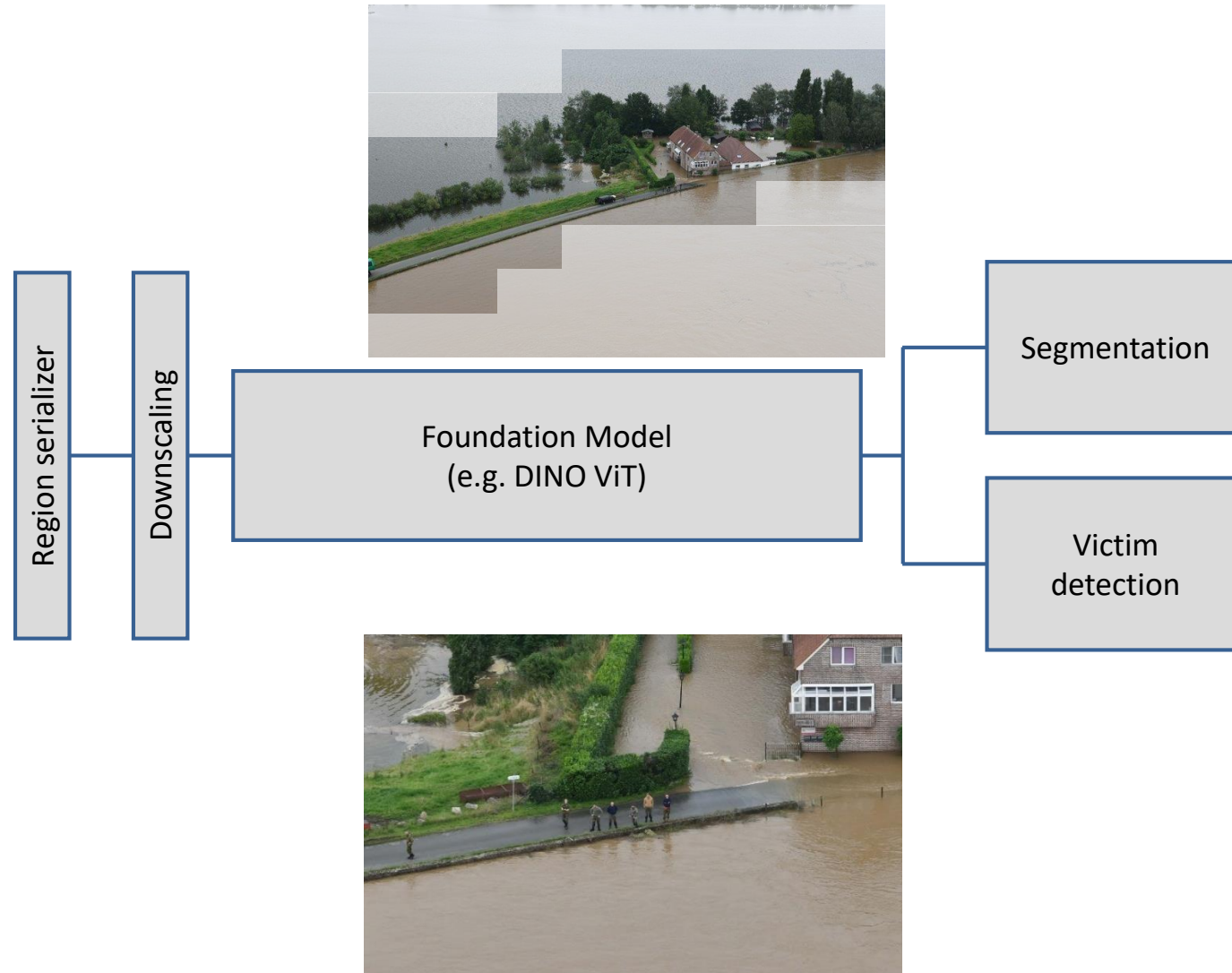


Fast situational awareness

UAV-based crisis support through edge AI

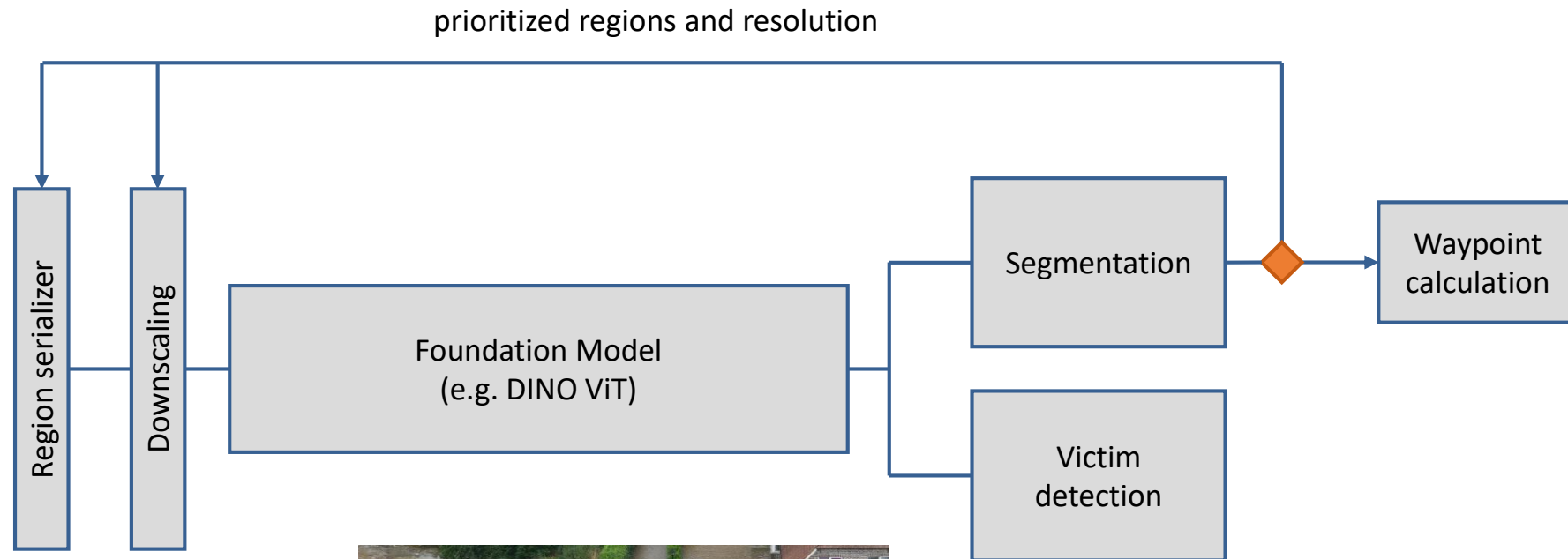


Waterbouwkundig Labo



Fast situational awareness

UAV-based crisis support through edge AI

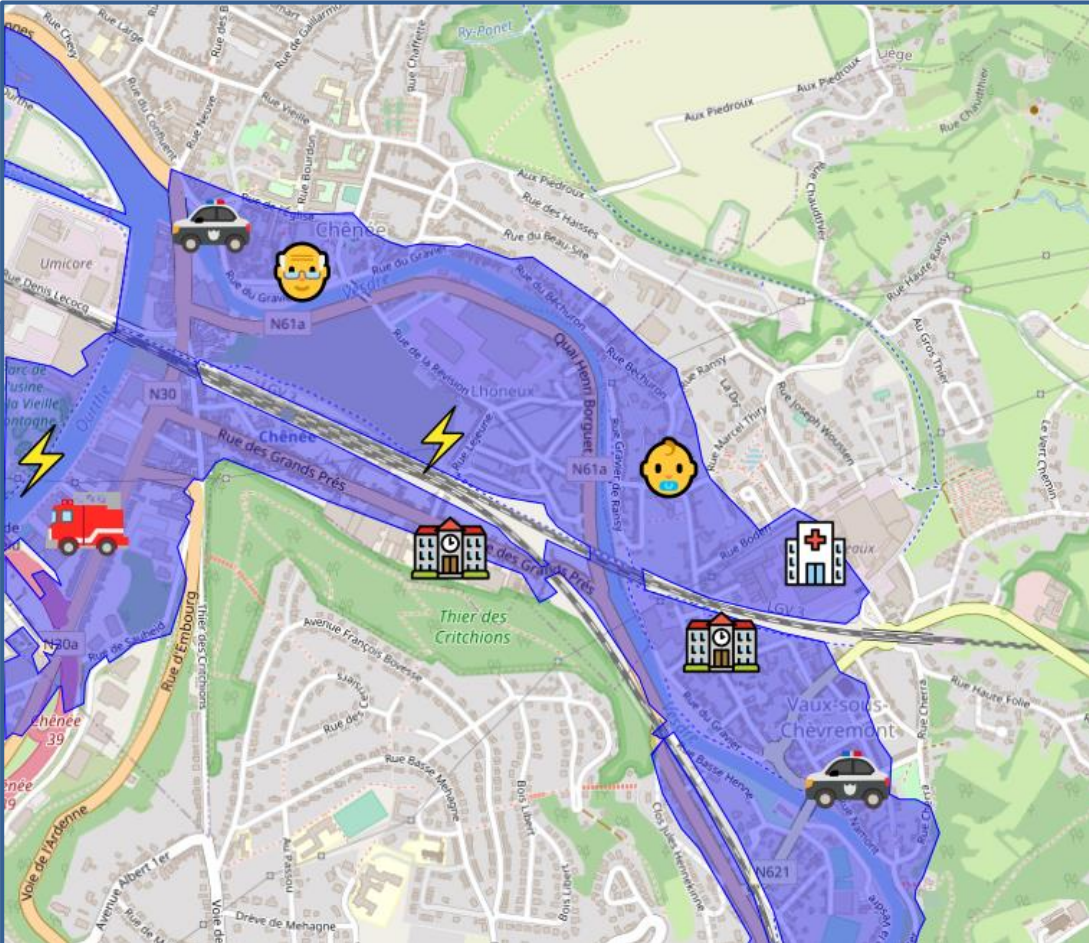
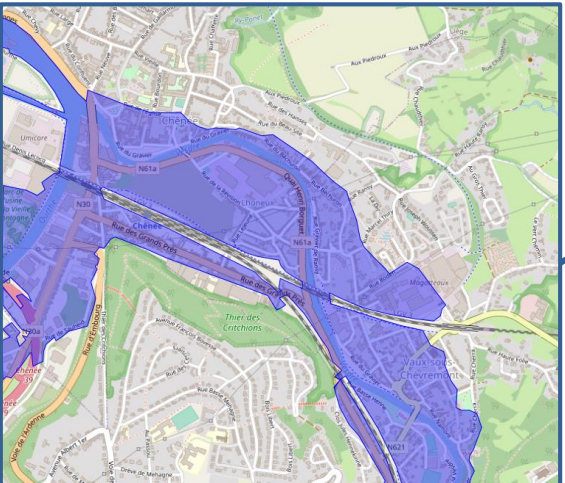


Waterbouwkundig Labo

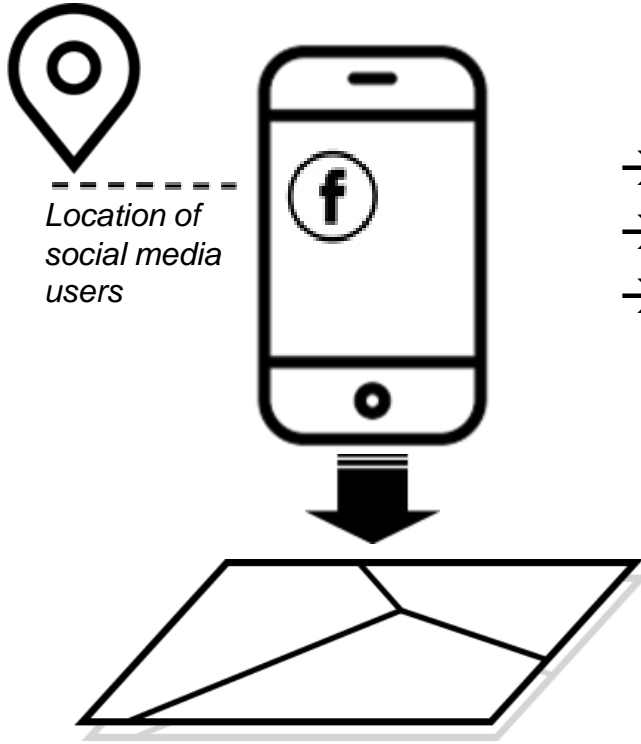


Fast impact assessment

Critical and vulnerable facilities – land uses → priority for help



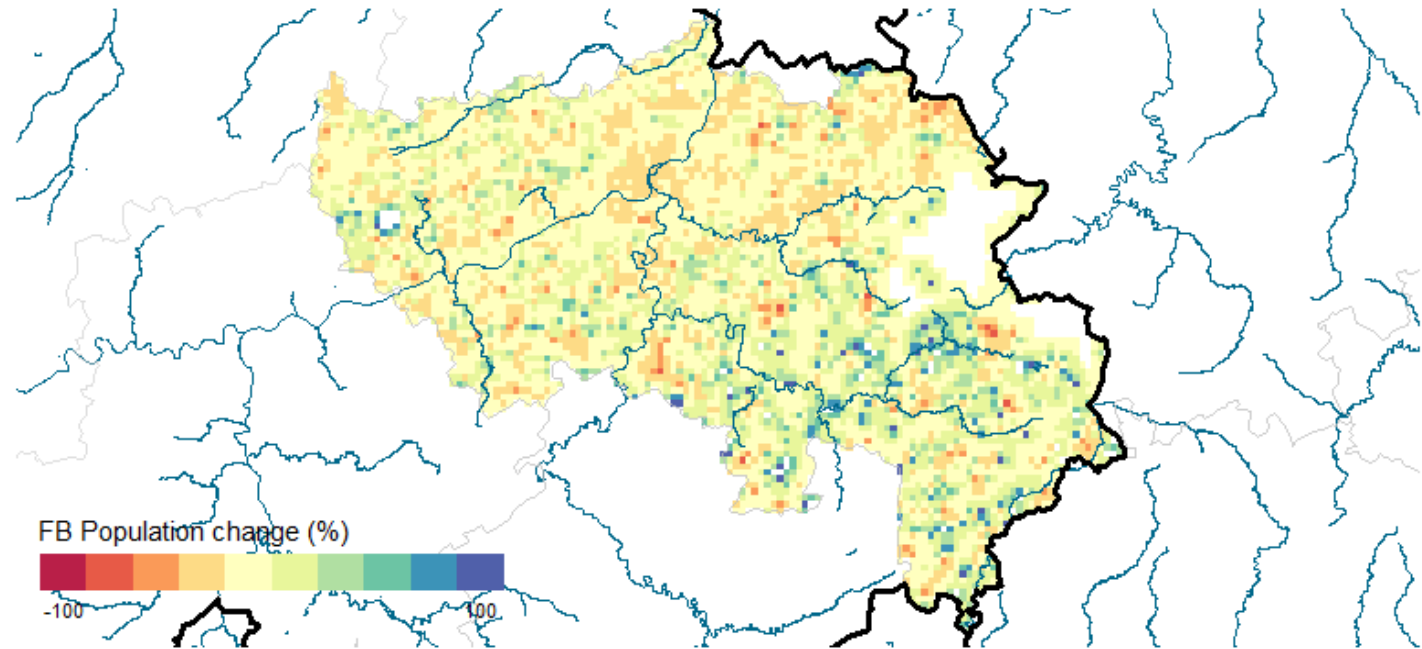
Fast impact assessment



- Identification of areas heavily impacted
- Population dynamics over time
- Prove reliability with stakeholders

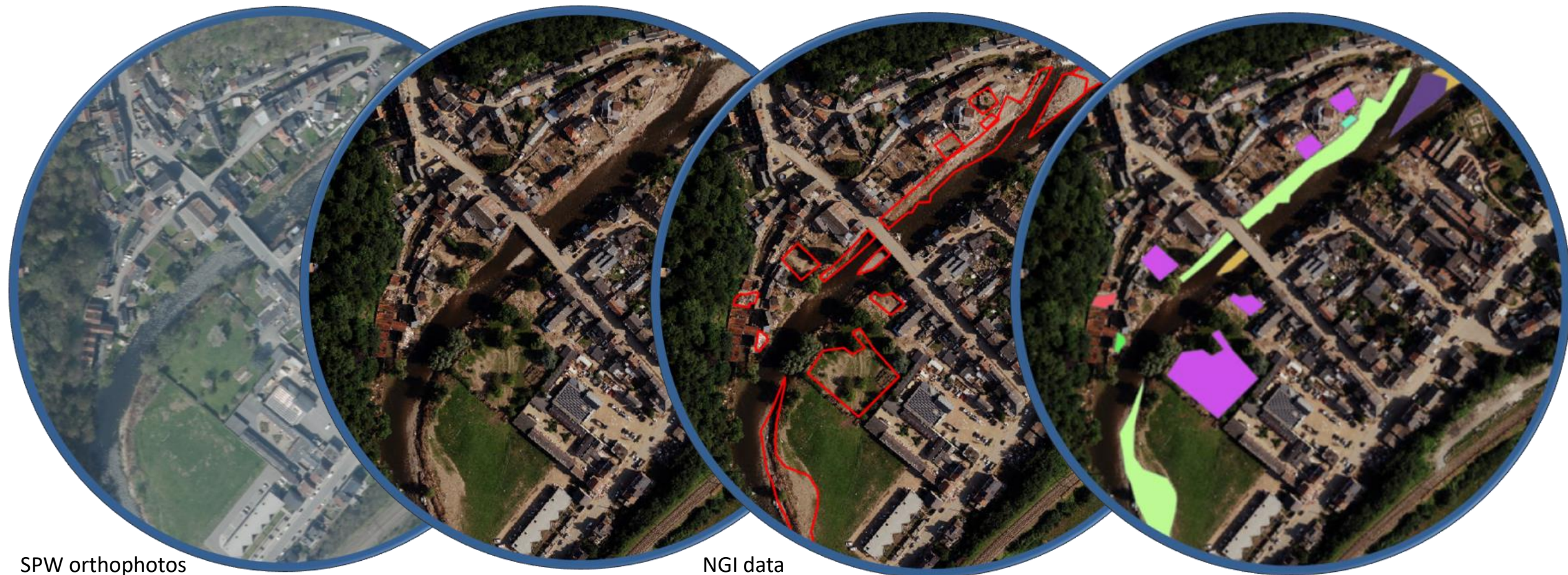
Dynamic population mapping

14/07/21 00:00:00



Long-term impact assessment

Identification & classification of damages at multi-scale: aerial imagery



SPW orthophotos

NGI data

Long-term impact assessment

Identification & classification of damages at multi-scale: multispectral satellite imagery



T - 1 month

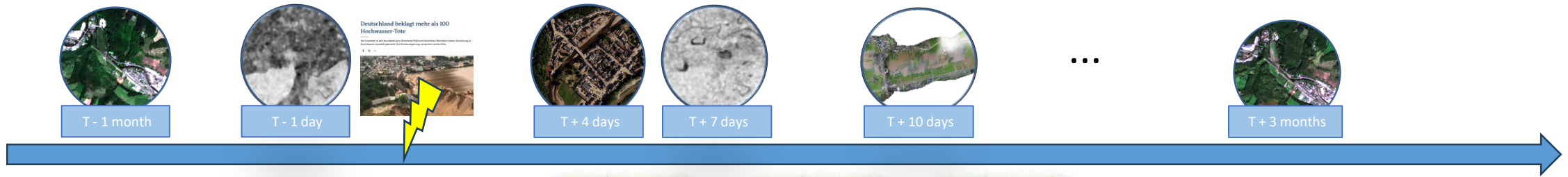


T + 4 days



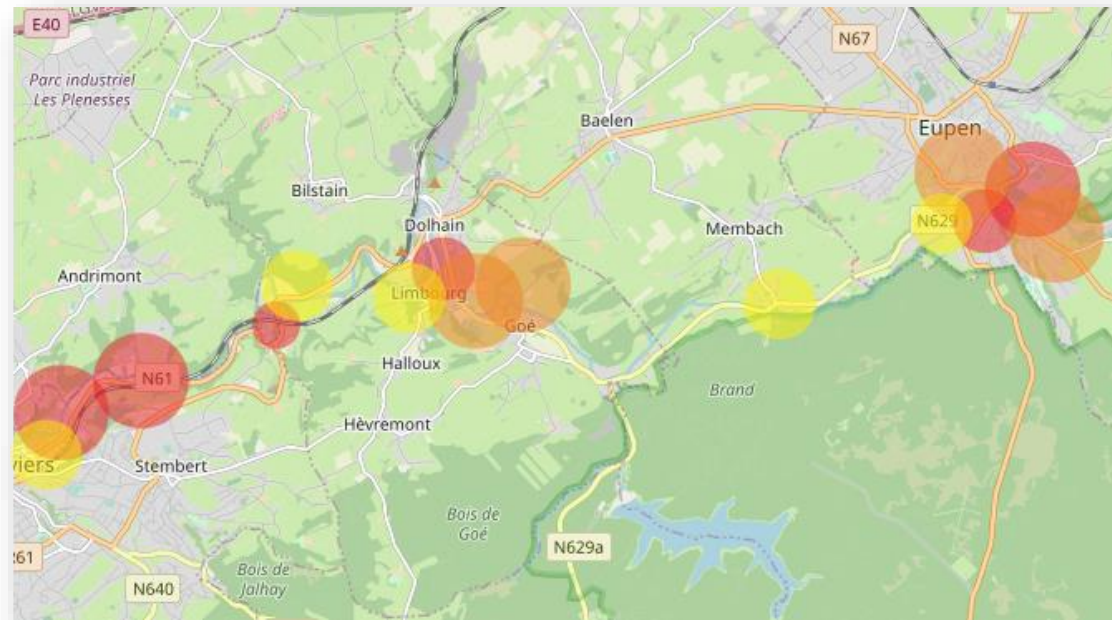
T + 3 months

Integration: disaster hot spot mapping



1 Harmonize input data

2 Probabilistic data fusion



3 Uncertainty quantification

4 Demo of hot spots map

FLOWS



This is just the beginning...

