

THE DESTINATION EARTH PLATFORM

May 2024



1. DestinE Platform Goals and Vision
2. Design to Fulfill DestinE Objectives
3. Technical Implementation by Industry

1. DestinE Platform Goals and Vision

2. Design to Fulfill DestinE Objectives

3. Technical Implementation by Industry

The DestinE Platform fosters the **growth** of European Industry at the service of the **digital and green transitions**.

The Platform represents a **European sovereign** solution to **secure** critical services and information, leveraging the conformity to **European regulations** to stimulate **innovation** and new **operational** usages for a **limitless community** of **climate responsible** actors.

TWO CRUCIAL ASSETS IN ONE FRAMEWORK



A sovereign European infrastructure in a powerful framework that is mindful of climate concerns

A flexible ecosystem of services available to all DestinE users





Attractive services to all users

DestinE

General Public

- DestinE Service offering open & free access and information

European Projects

- Allocation of dedicated resources upon DestinE governance decision

DestinE Platform Services are meant to favor local exploitation



An open ecosystem – Ready for collaboration

DestinE

General Public

- DestinE Service offering open & free access and information



European Projects

- Allocation of dedicated resources upon DestinE governance decision



Third Parties

- Services onboarded in the Platform offering open & free access

Autonomous Projects

- Third Party allocation autonomy (e.g., ESA DTE)

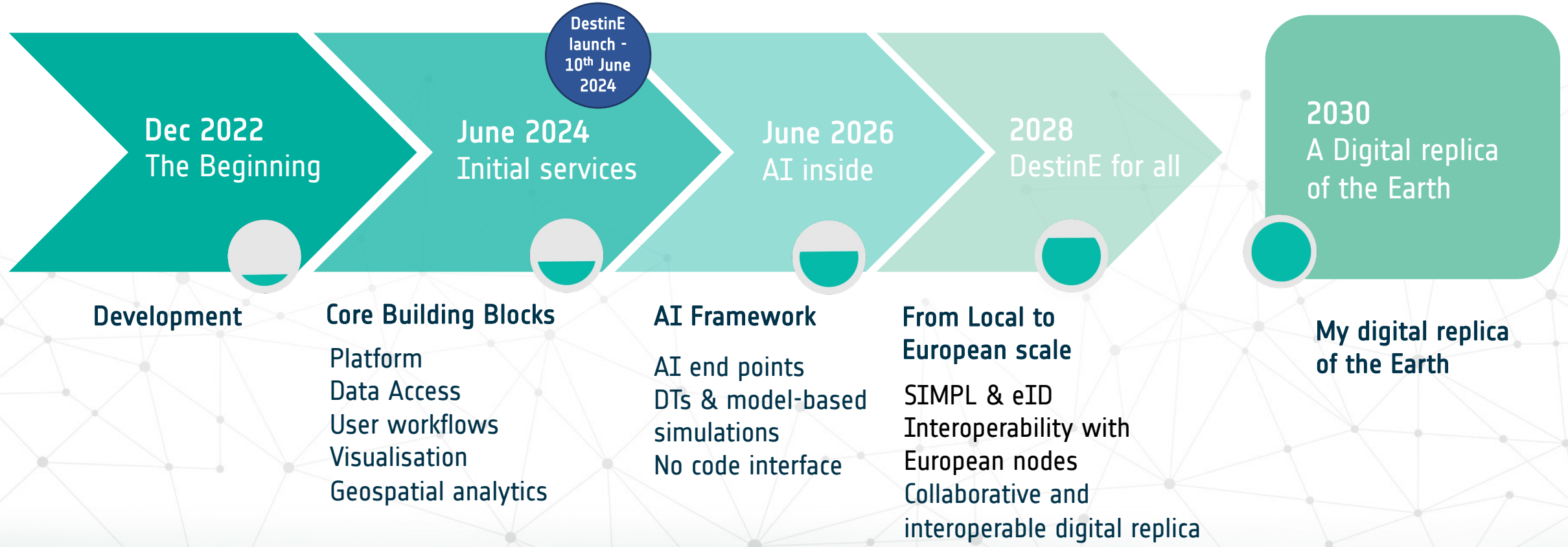
Third Party services may benefit from the whole ecosystem

ESA fully embraces the **climate change challenges** for the platform operations

- DestinE Platform activities shall become a **sustainable factor of economic growth** in a digital responsible framework
- Quality standards to **support all usages** shall be maintained
- DestinE platform activities shall become more **sustainable – 4 pillars**:
 - 🌍 Measure and Transparency
 - 🌍 Optimisation
 - 🌍 Usage adaptation and sobriety
 - 🌍 Training and increase of related competencies

All platform partners shall be involved and committed to define and implement a reference trajectory

An operational environment ready to be used and to grow



An operational environment ready to enable your operations

1. DestinE Platform Goals and Vision

2. Design to Fulfill DestinE Objectives

3. Technical Implementation by Industry



Digital Twin Engine (& DTs Interface)



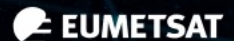
Data Lake

Large amounts of new data
(DestinE DTs data)

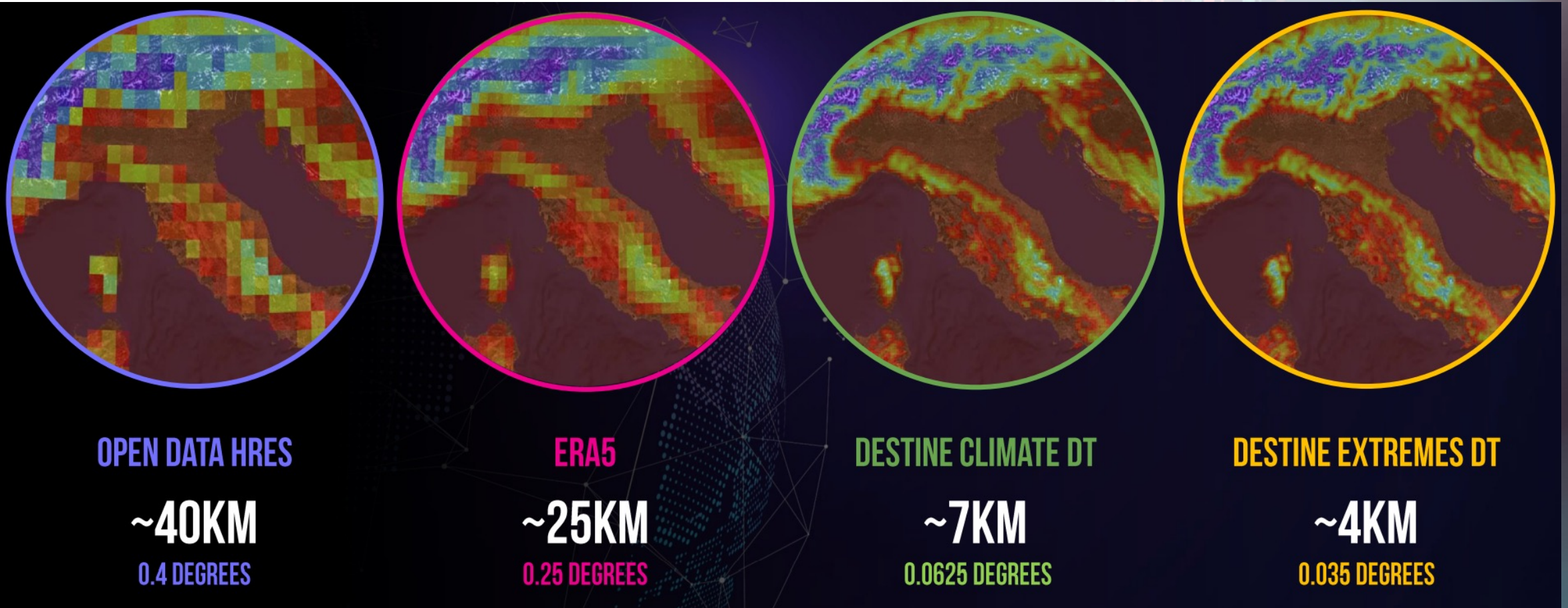


DestinE Platform

Users



New resolutions for data



New grids for data



GAUSSIAN GRID



OCTAHEDRAL GRID



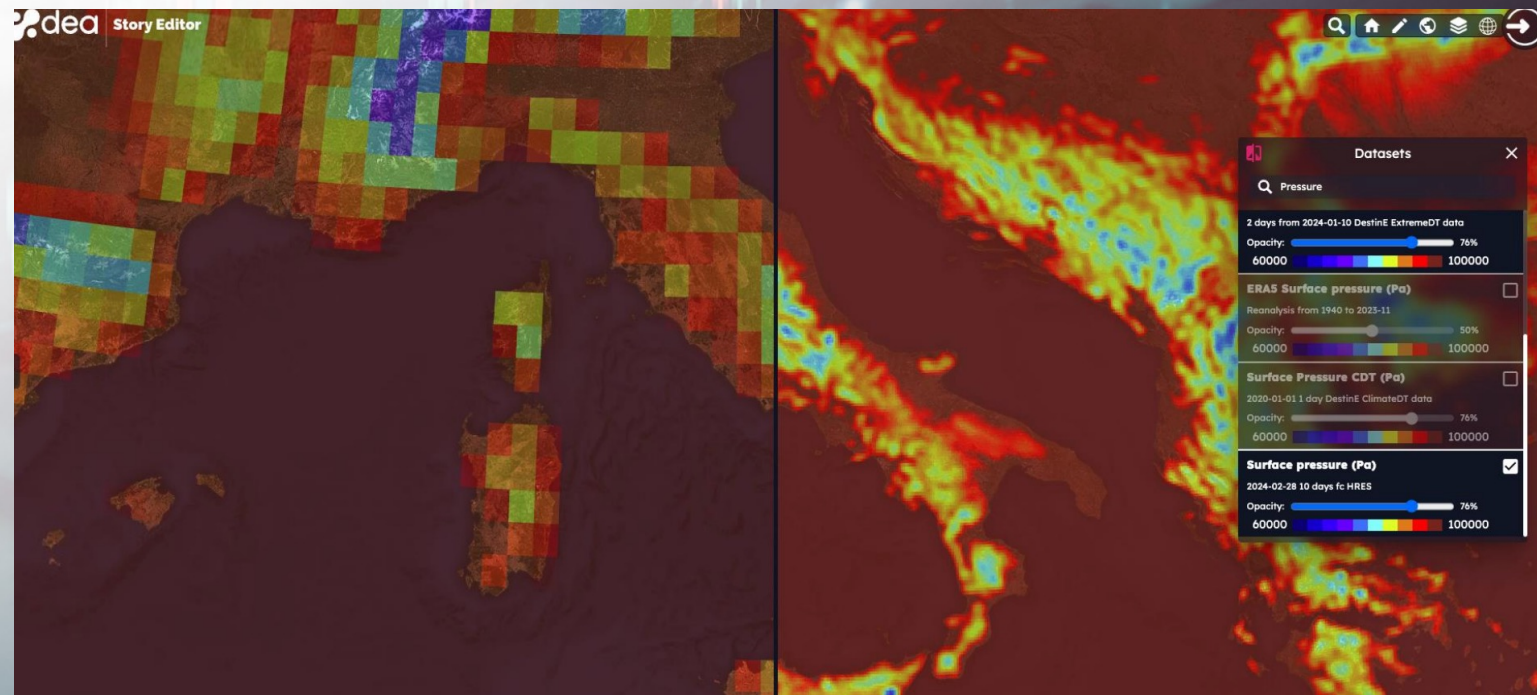
HEALPIX GRID

To enable DestinE data exploitation, the platform shall not abandon the users in front of such a huge volume of data.

Large flow of high-quality data with accumulated Digital Twin data in the order of PetaBytes

(~ 3 years of Copernicus Satellites user data)

ERA5 vs. new Climate DT data



Platform design principles

The platform is not built as a monolithic or rigid application

The platform is conceived as an open and dynamic framework of operational services

The platform is not built as a data distribution system

The platform enables and simplifies the interaction with DestinE data (E.g. dedicated APIs with high potential for efficiency e.g. data streaming, compression, ... vs one API for all)

The platform shall favour innovation with new operational services

New data, new problems, new difficulties: Solutions shall be adapted to the challenges

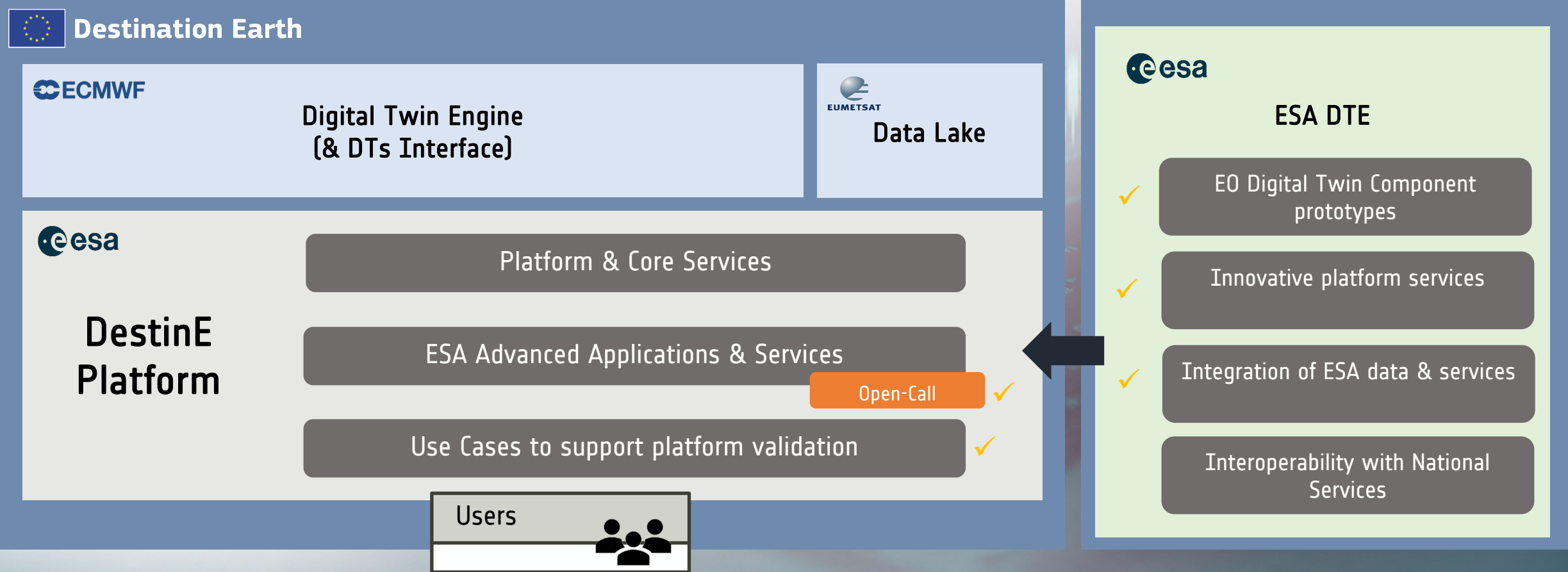
The platform shall favour scalability

Solutions shall be scalable to support large growth by design

Resource management is delegated to the services

How to contribute to building the Platform?

✓ Activities open soon



How to participate?

DestinE:

Yearly selection of use cases to support validation of the platform functions, performances and fit for purpose

Open call for advanced applications including support for platform integration and early service operations

ESA DTE:

Earth Observation Digital Twin Components – first call just closed; second call planned for Q1 2025

Make ESA EO data & services available in the DestinE context - call ready for opening

Prototype new services ready for Destine operations

Industry can apply to the different open competitions, no conflict of interest identified at this stage between DestinE or ESA DTE competitions (! eligibility and rules are different)

Large focus on on-boarding : a one-year competitive cycle offering regular opportunities

1. DestinE Platform Goals and Vision

2. Design to Fulfill DestinE Objectives

3. Technical Implementation by Industry



Destination Earth



Digital Twin Engine
(& DTs Interface)



Data Lake



DestinE Platform

Platform & Core Services

ESA Advanced Applications & Services

Use Cases to support platform validation

Users



ESA DTE

EO Digital Twin Component
prototypes

Innovative platform services

Integration of ESA data & services

Interoperability with National
Services



THE CONSORTIUM



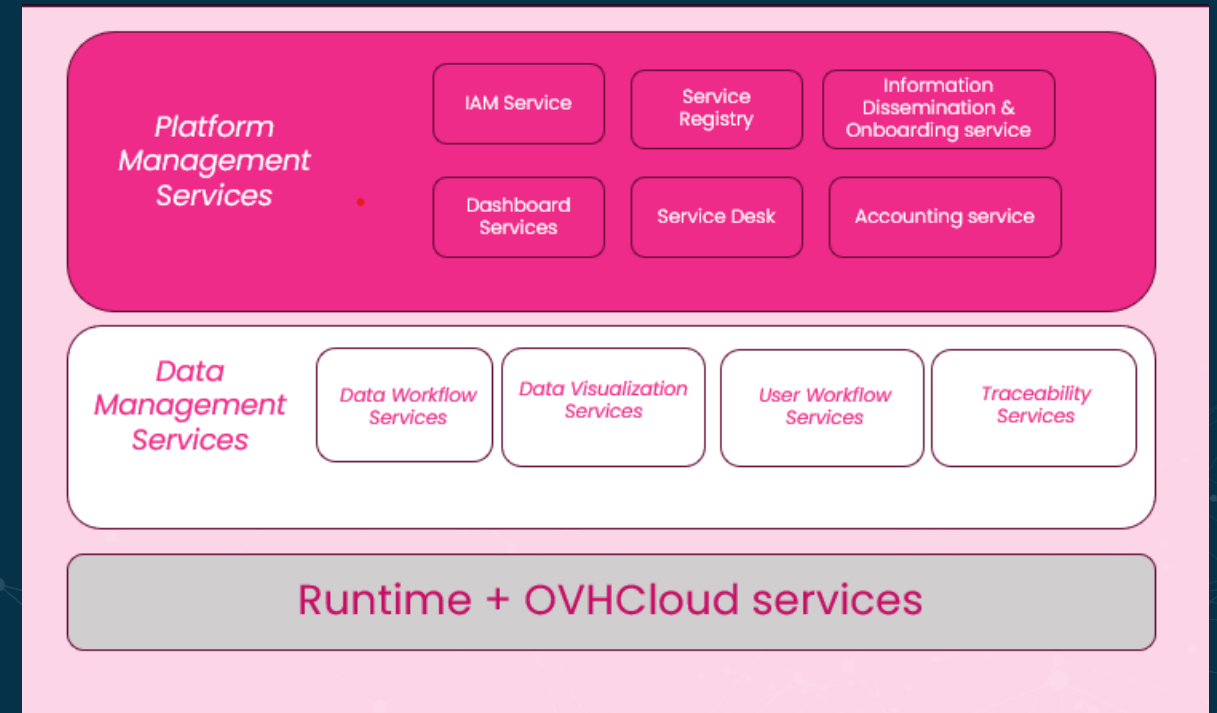
DESTINE PLATFORM OVERVIEW

- **PLATFORM MANAGEMENT SERVICES**

Trusted entities within the ecosystem, competing in creating a community around services, establishing trust among participants.

- **DATA MANAGEMENT SERVICES**

All services allowing consumers to access data and applications.



PLATFORM MANAGEMENT SERVICES

HIGH-LEVEL OVERVIEW



DASHBOARD SERVICES

Provides **live information** about the platform usage, performance and status of the Registered Services



ACCOUNTING

- Allows Users to monitor their consumption of services resources



INFORMATION DISSEMINATION

- Take care of the Web information Presence layer. Supports Users and Services providing **up-to-date and accurate information** on the platform Services.
- Provides engineering support for new Services **integrating in the platform** and exploiting the platform functionalities.



ORCHESTRATION PLATFORM (RUNTIME)

- Common layer for the deployment and operation of all the services.
- Integrates the cloud infrastructure layer
- Security management capabilities



SPECIALISED SERVICE DESK

Supports Users and Services with thematic discussion forums, issue management, ticketing and technical material and information.

PLATFORM MANAGEMENT SERVICES

IAM and SERVICE REGISTRY



IDENTITY AND ACCESS MANAGEMENT

Unified DestinE Platform user management service, granting access to all authorised Registered Services based on the same digital identity

Allows Users to:

- Register and manage user profiles
- Authenticate with credentials from external Identity Providers (IDP Federation)
- Authenticate through Single Sign On (Service Federation)

Allows Service Providers to:

- allocate Service resources to projects or users' activities



SERVICE REGISTRY

- Catalogue of all applications and services, integrated in the platform, including the Core Services
- Exposes Service end-points
- Entry point for the Onboarding process

SERVICE REGISTRY

The comprehensive catalogue of all services available on the DESP platform. You can easily discover and search all entries, conveniently organised by thematic areas.

In addition, the Service Registry allows the registration of new services in DESP, through our straightforward [onboarding](#) procedure.

This will empower you to enhance your engagement with our community and actively contribute to the DESP ecosystem.

PLATFORM MANAGEMENT SERVICES

WEB INTERFACE

LANDING PAGE



Services provided by the other DestinE components

SERVICE REGISTRY



DATA MANAGEMENT SERVICES

Data Workflow: EDEN and DCMS

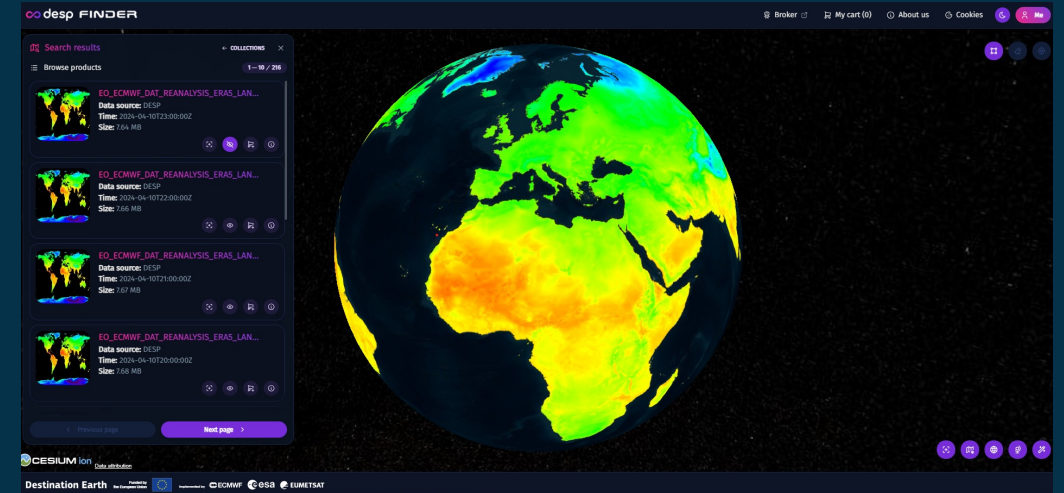
Eden is the entry point to access all the data available from

- the DestinE Data Lake including simulations generated by the DestinE Digital Twins
- federated data sources e.g. CDSE

The **Data Cache Management Service (DCMS)** is the rolling archive storing data retrieved from the DestinE Platform data sources.

Available interfaces are HTTP APIs

- STAC
- S3



DATA MANAGEMENT SERVICES

User Workflow: INSULA

DEVELOPMENT ENVIRONMENT

Ready-to-use user environments with pre-installed libraries.

It is possible to add storage by attaching OVH containers and use CPUs/GPUs.

PROCESSING ENVIRONMENT

Advanced processing service available via UI or API:

- Create structure of the service implementing the algorithm via templating (e.g., AI/ML services, EO Processing)
- Add code and configuration to the structure (I/O, parallel computing)
- Build code and configuration via UI

Jupyter and
Beaker

Python,
R,
Julia

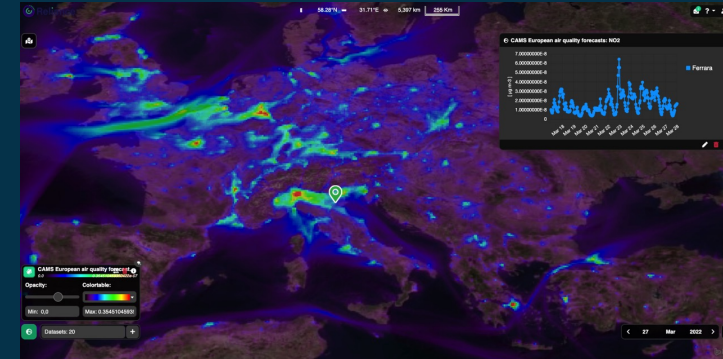
The image displays two screenshots of the INSULA user interface. The top screenshot shows the 'Development Environment' with a welcome message and three main actions: 'Process some data', 'Monitor your processings', and 'Integrate your own algorithm'. Below these are search and open buttons for services like 'Standard processing', 'Systematic processing', and 'Event processing'. The bottom screenshot shows the 'Processing Environment' for a specific job (Job 436). It displays job details such as ID, owner, service, and processing time. A progress bar indicates the job is 'Completed' with steps for 'Job scheduling', 'Data fetching', 'Processing', and 'Ingesting outputs'. Below the progress bar, there are sections for 'Input parameters', 'Output files', and 'Logs', with a list of output files including 'NDVI_S2_L1C_3TQM_20230523T100828.tif'.

DATA MANAGEMENT SERVICES

Data Visualization: VIZLAB and DEA

Vizlab is a **Data visualisation in 2D-3D-4D Service** (timeseries)

- Supports geotiff, netcdf, grib, shapefile, WMS, WMTS, etc
- Data available on cache are pre-processed for visualization
- User-generated Data visualisation in 2D-3D-4D for supported standard formats

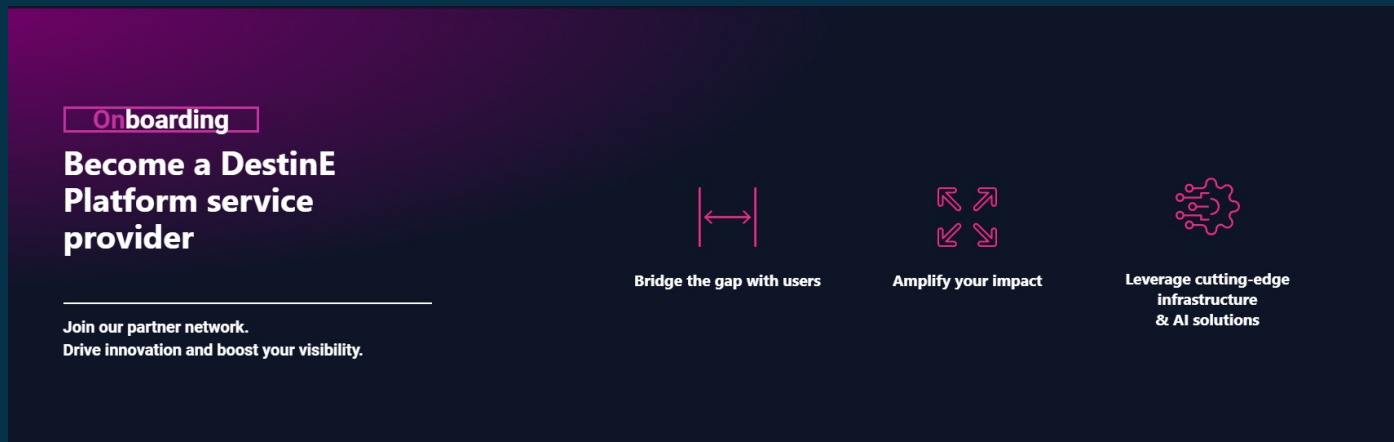


DEA Service is a content creation platform that allows users to create a story without needing to write a line of code.

This enables the non-expert users to share their own engaging visualizations with other people in a simple way.

DESTINE PLATFORM

BECOME A DESTINE SERVICE PROVIDER



- **Stage 1: Request**
Acknowledge and provide service information.
- **Stage 2: Evaluation**
Your request will be evaluated based on the match with DestinE Platform drivers.
- **Stage 3: Integration**
We set up the collaboration platform for integration and testing. Your service is published on our platform.

Register now at <https://platform.destine.eu>
(beta-testing phase until May 17th)

We want you!

Destination Earth

Home Services Onboarding Beta Testing Updates About Support

Sign In

DestinE Platform

Your gateway to a sustainable future

A unique ecosystem of services harnessing the power of Destination Earth.

Register

13 Services already available

Explore

6 Services coming soon

Explore

557 Registered Users

Join us

Destination Earth

Funded by the European Union

Implemented by ECMWF ESA EUMETSAT

Thank you!

Inés Sanz Morère
(ines.sanz.morere@esa.int)

Destination Earth

Funded by
the European Union



Implemented by

