

# Drone Image Processing to Detect Small Water Body Dynamics for Fasciola Risk Modelling



Wouter Hantson, Avia-GIS



# SATH ELI Team

---



Laboratory of Forest Management and  
Spatial Information Techniques (FORSIT)  
Faculty of Bioscience Engineering, Ghent University, Belgium



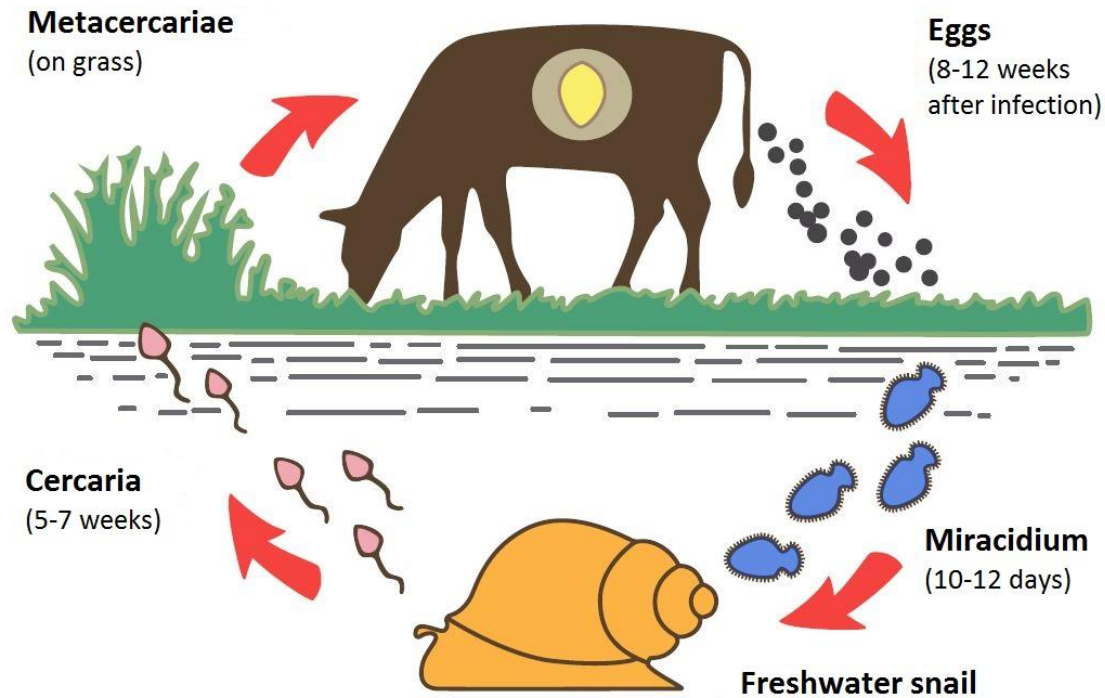
Agriculture and Veterinary Information and Analysis (Avia-GIS)  
Belgium



Laboratory of Parasitology (VETPAR)  
Faculty of Veterinary Medicine, Ghent University, Belgium



- Common liver fluke disease caused by *Fasciola hepatica*
- Intermediate snail host lives in small water bodies





# Where is Galba?

*Galba truncatula*

Habitat: SWBs like ponds, ditches, trenches and their transition zones

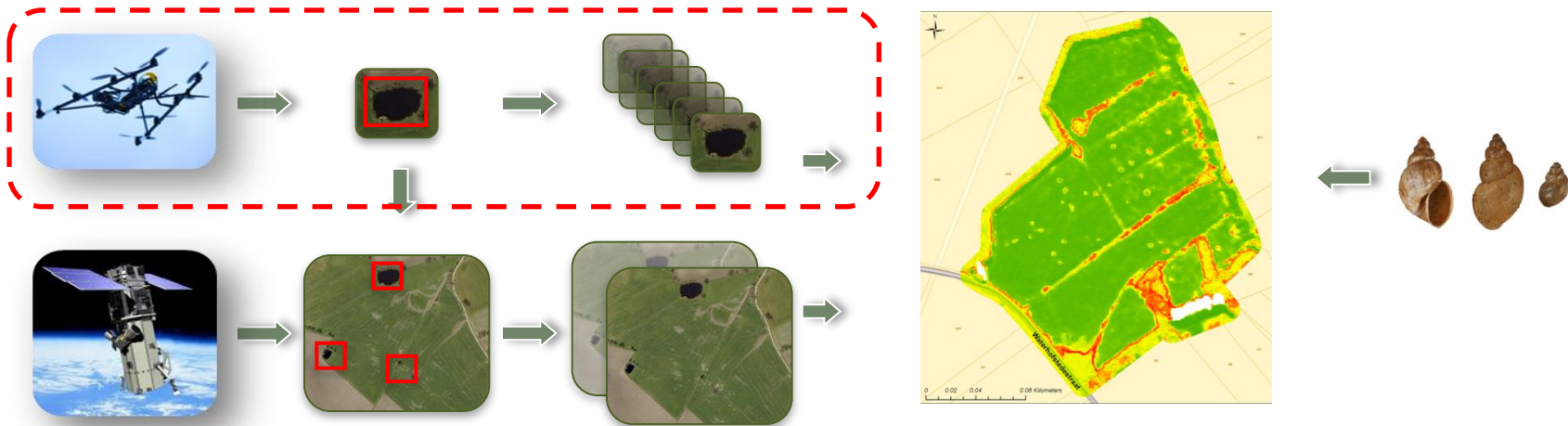




# Objectives

Multi-platform Small Water Body monitoring system  
using UAV & Satellite Imagery

→ Infection risk map for liver fluke: from landscape to farm level



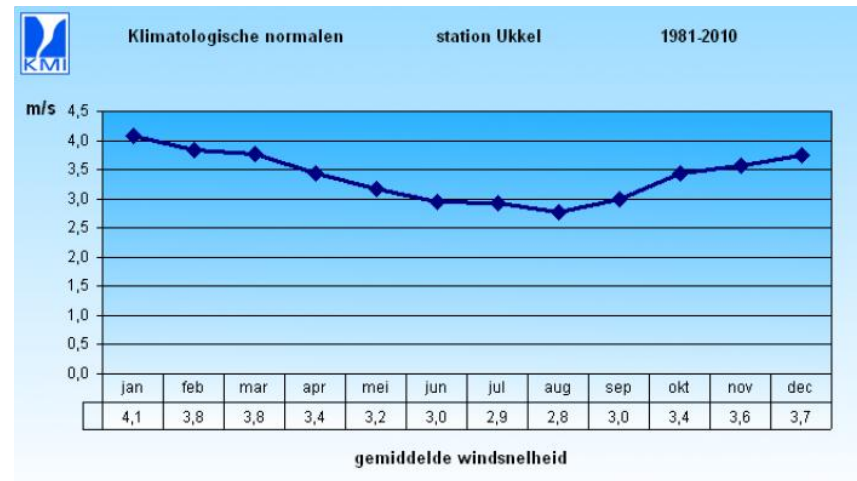






# FALCON 8

- 8-copter
  - Stable flight
  - Easy handling
  - Ready to fly
- GPS flight
- 16-18min. flight time
- 500g payload
- Tolerate wind speed up to 10m/s or 36km/h
  - 3 à 4 m/s Ukkel
  - 6 à 7 m/s coast





# UAV Legislation

---

## Legal UAV flights in Belgium

- Research flights
- Outside airport flight zones
- Signed agreement
  - Mayor of the city
  - Temporal airport: Permission to take off and land
  - Inhabitants within 200m
- Document for 'Directorate-General for aviation'

NOTAM: Study sites are marked for other air traffic





# Flight planning

GPS Mission

Latitude: 51.3200142 View: 614.30m x 468.79m  
Longitude: 4.7268418  
Height: 20 m

Waypoint List

- WP 1
- WP 2
- WP 3
- WP 4
- WP 5
- WP 6
- WP 7
- WP 8
- WP 9
- WP 10
- WP 11
- WP 12
- WP 13

Placemark List

Cursorfunction

- None
- Fly To
- Add Waypoint
- Add Placemark
- Edit Waypoints

Mission Control

**Start Mission @**

Goto Waypoint

waypoint nr. 1

Endless Loop

Abort Mission

Mission Status: ●

Commands

Matrix Editor

Do Panorama!

Point Camera Down

Come Home

Transmission Status

Last Acknowledge: 0

Navigation Status

wp\_status: 0

Distance to WP: 0



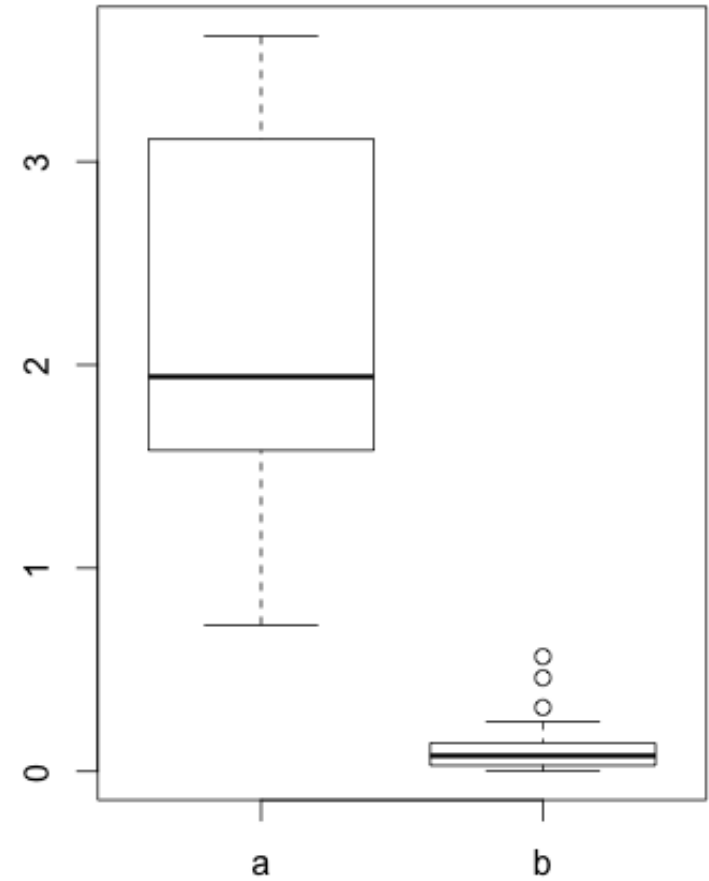
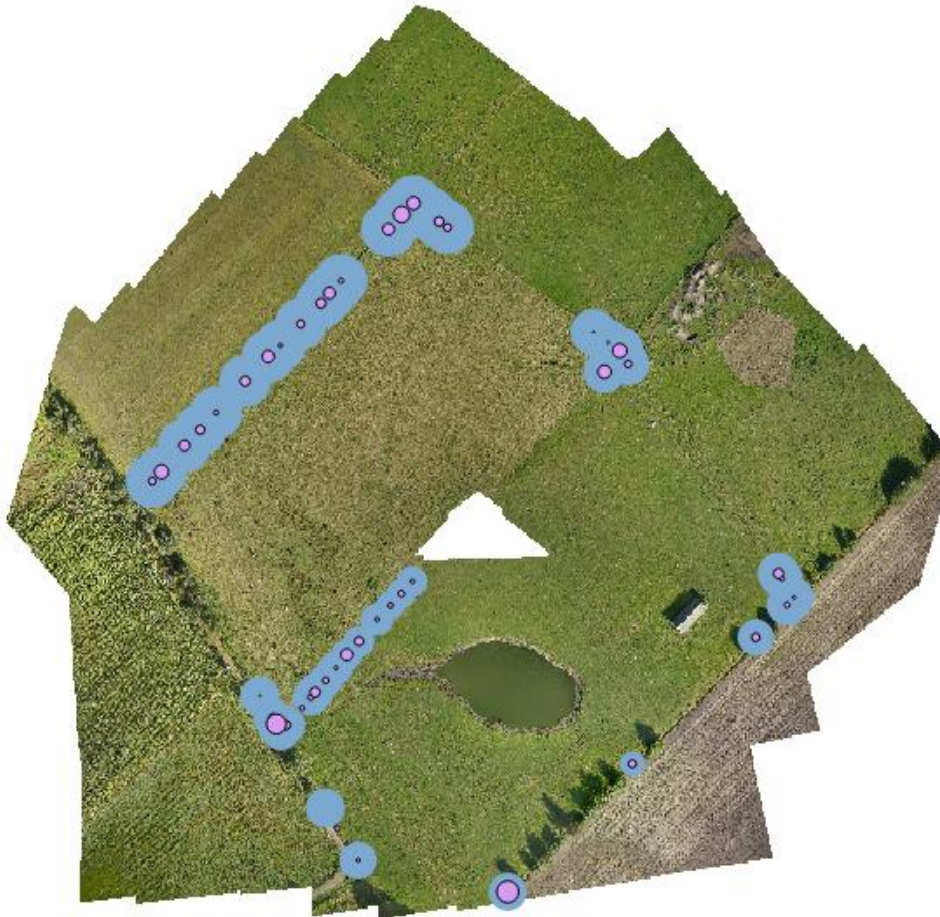
# UAV Image Acquisition







# Horizontal Image Accuracy







# UAV image acquisition

**2012**

Sep Oct Nov Dec



**September 2012**



**2013**

Jan Feb Mar Apr May Jun Jul Aug Sep Oct



**October 2012**



**November 2013**





# UAV image acquisition

---

2012



2013









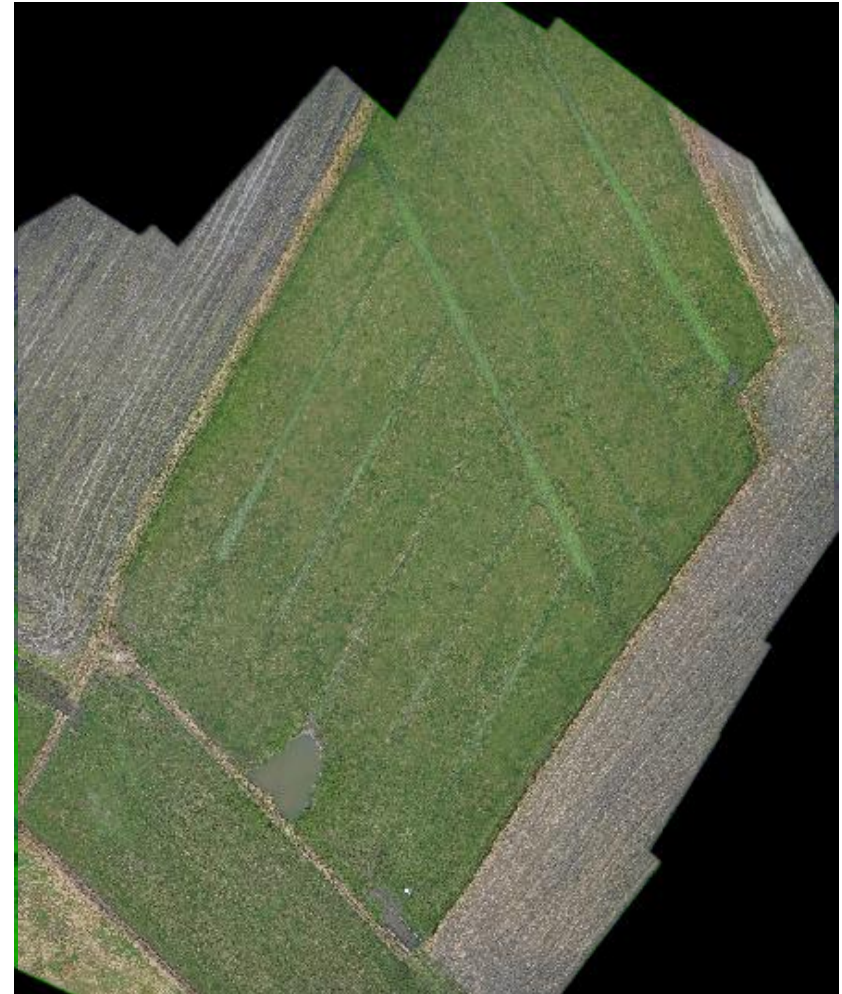


# Detection of SWBs: UAV

## UAV image classification

1. Collect training data
2. Decision Tree
  1. Object-based
  2. Pixel-based

-  Water
-  Dry grass
-  Wet grass/trampled
-  Bare Soil









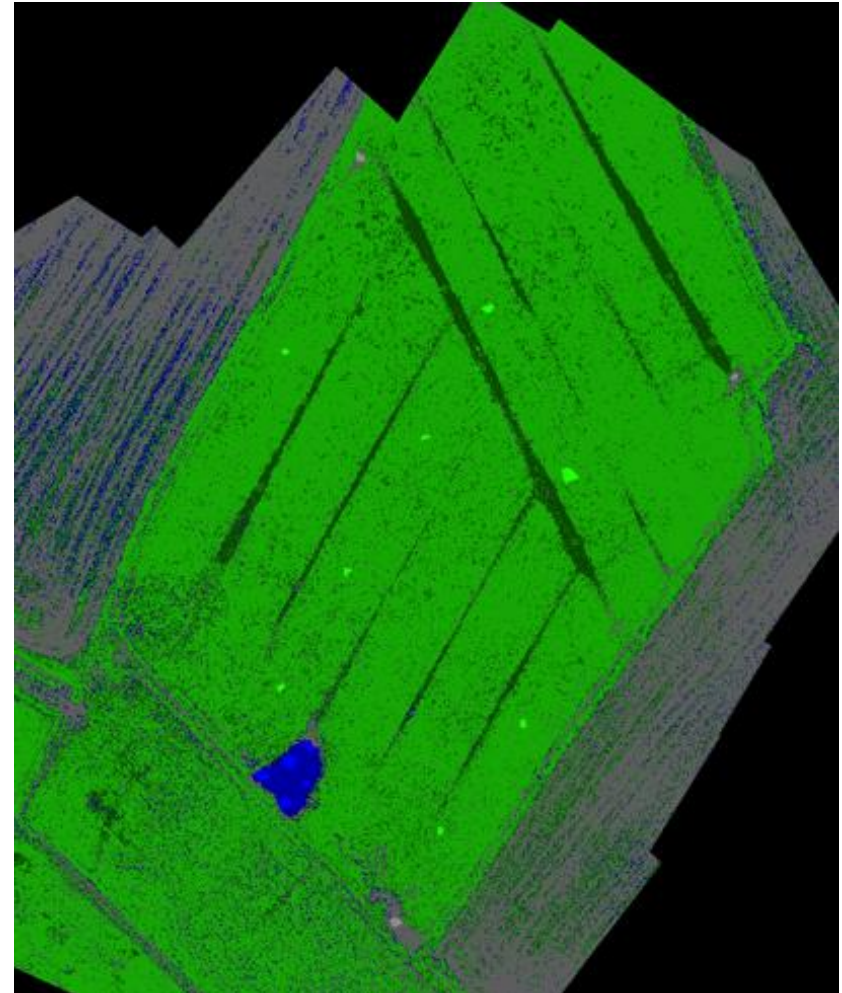


# Detection of SWBs: UAV

## UAV image classification

1. Collect training data
2. Decision Tree
  1. Object-based
  2. Pixel-based

-  Water
-  Dry grass
-  Wet grass/trampled
-  Bare Soil

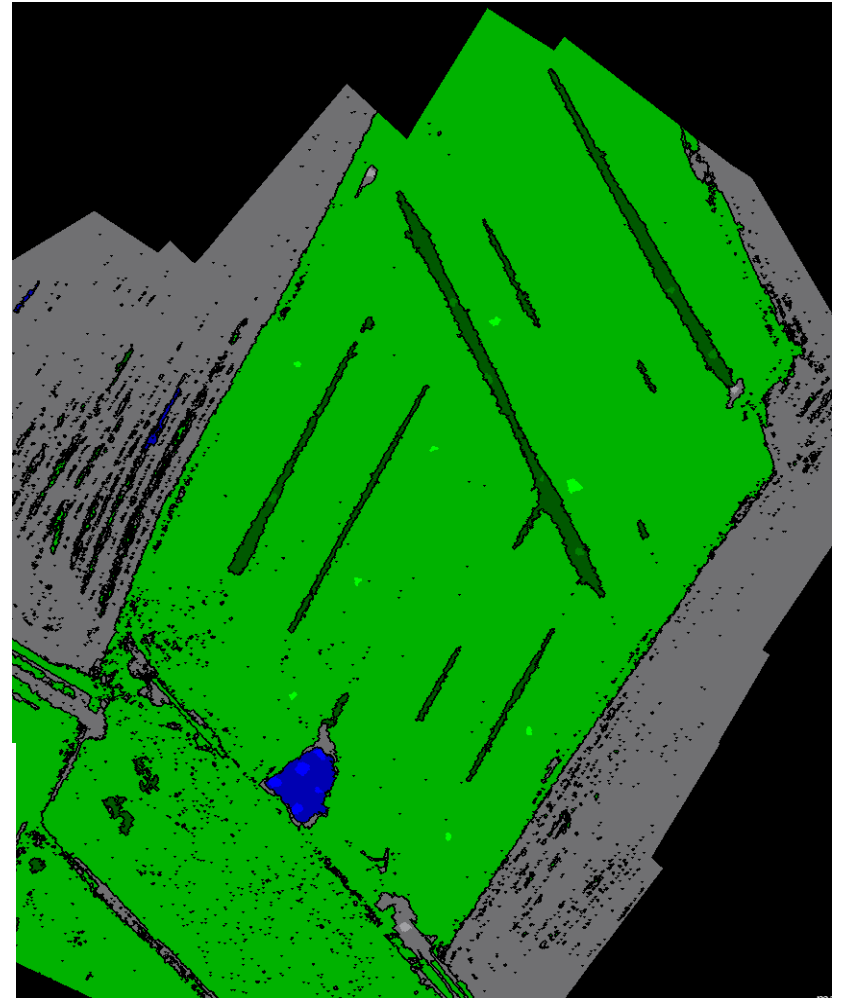
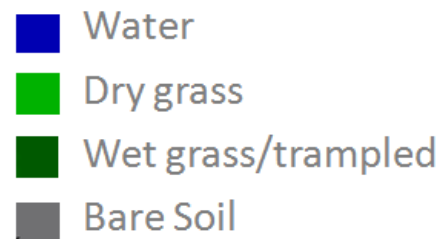




# Detection of SWBs: UAV

## UAV image classification

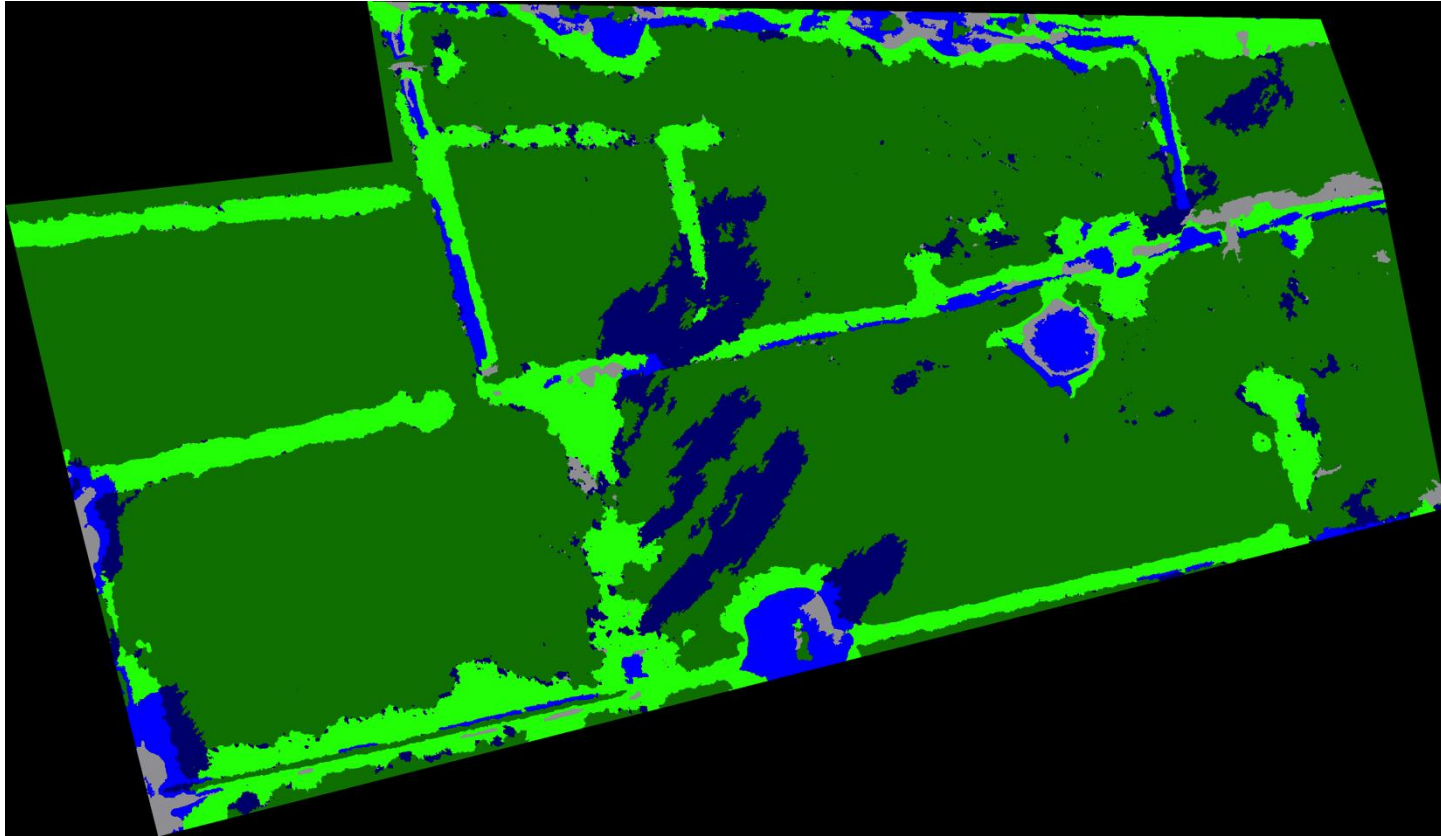
1. Collect training data
2. Create Decision Tree
3. Clean up (filter noise)





# SWB Time Series

---







On-going

- Change detection
  - Selection of the dynamic SWBs
  - Improve Digital Elevation Model
  - Seeding of WVII imagery
- Better Infection Risk Map





# Thank you!

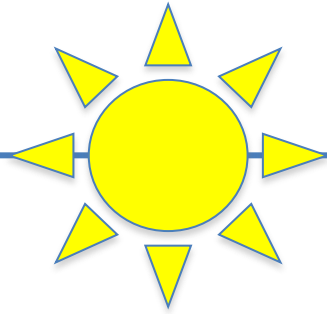




Questions?



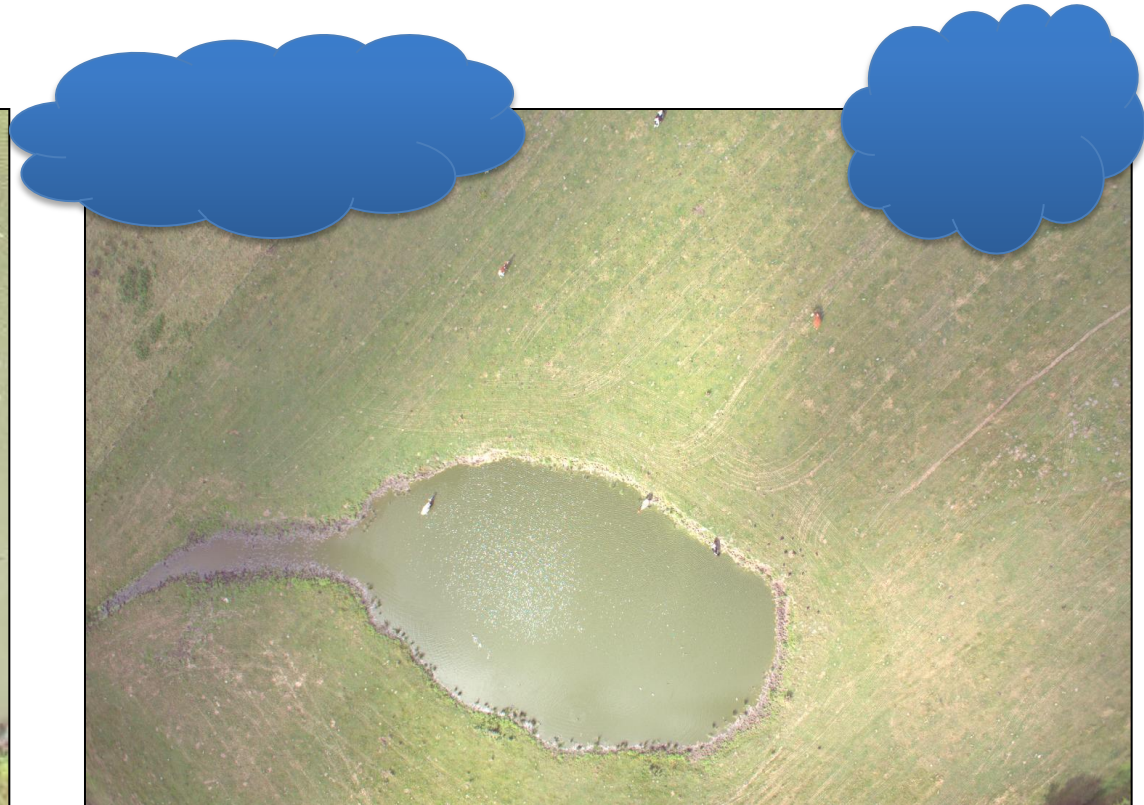




# UAV imagery & SUN

---

Sun glitter & shadow





# UAV imagery & SUN

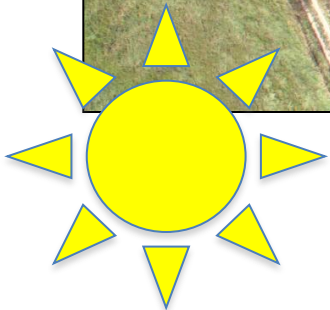
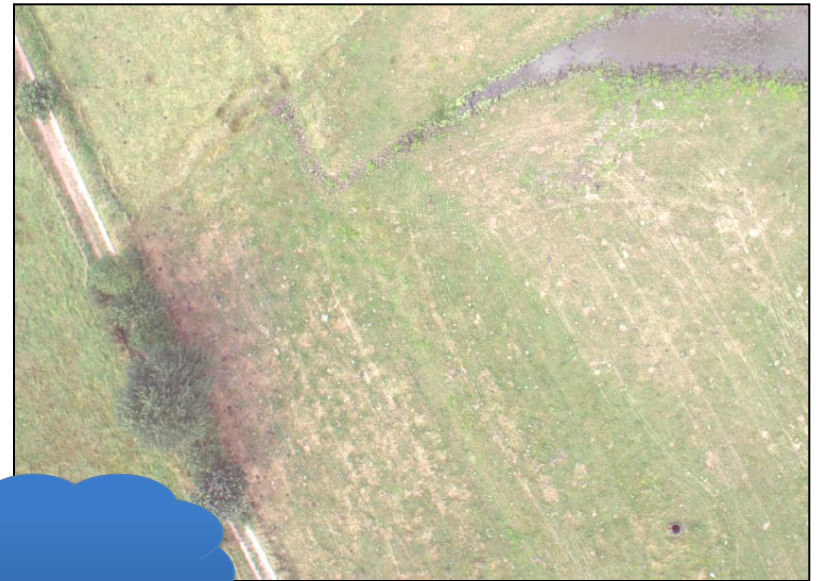
Sun: Sharp delineated shadows

&

Wind: Shadows move along the UAV flight



→+1min

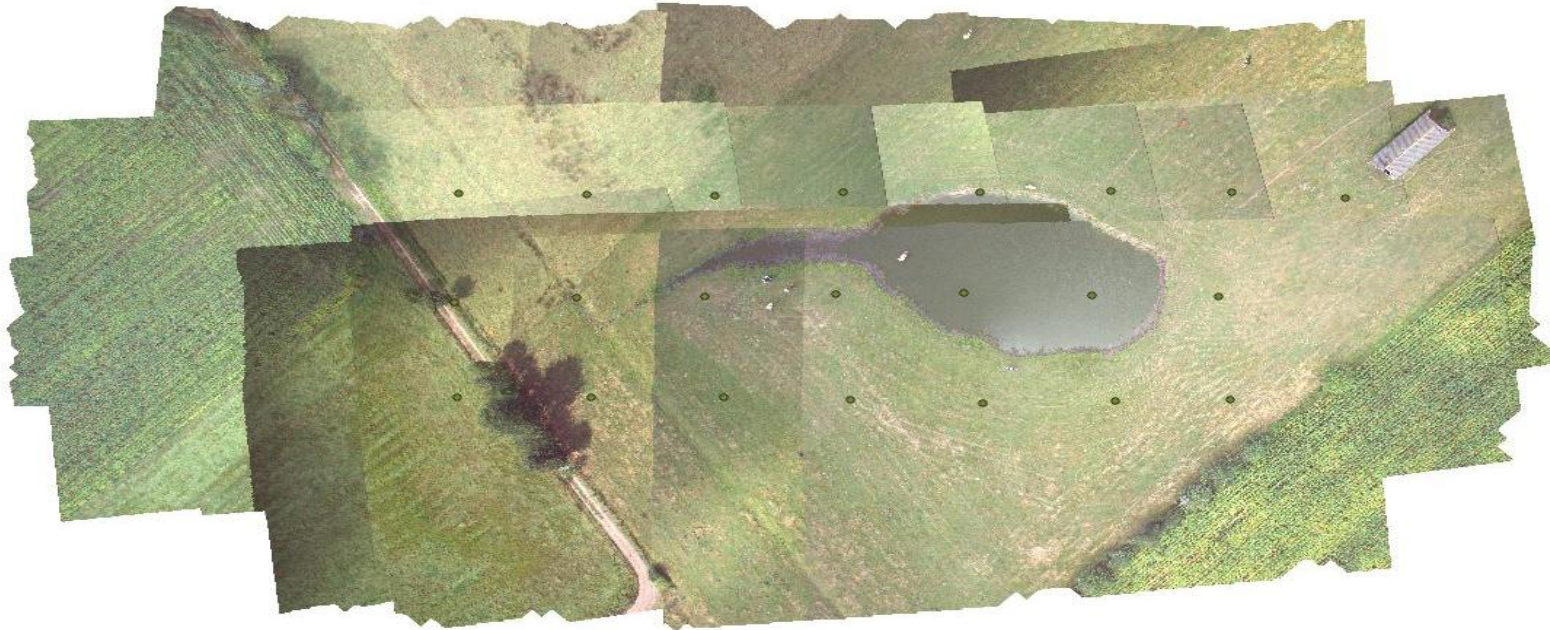






# UAV imagery & SUN

---





Useful?

---

