

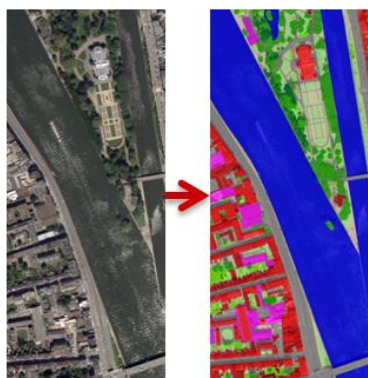
Spatially plan the population growth in Wallonia and, in particular, in Liège for shaping the Smart Cities

LULC

Remote Sensing & GIS

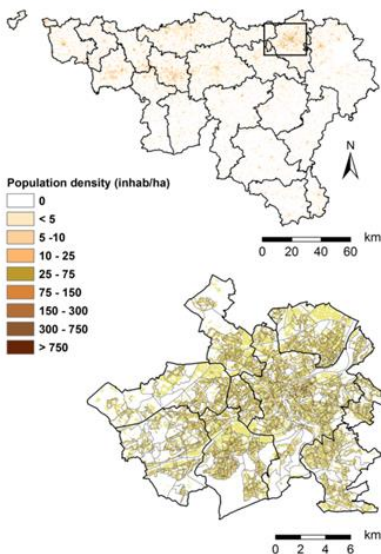


New LULC maps, focus on urban classes



Population

Population Density per ha



New tools & data for regional risk assessment

CORE OPERATIONAL PROJECT

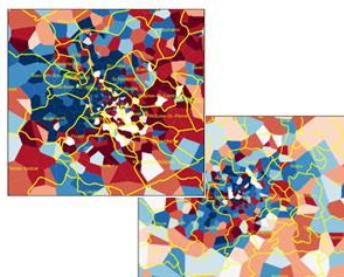
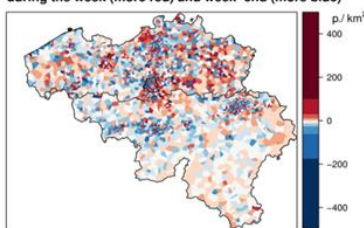
MOERMAN'S FUND



Dynamic

Population Density per day or hours

Difference between population density at night during the week (more red) and week-end (more blue)



Modelling Region

Land-Use & Population Density -> 2050



09/2015 -> 12/2018

EARTH OBSERVATION AND POPULATION MODELLING FOR MONITORING URBANIZATION

Supervised Classification Methods for Mapping Land Cover and Land Use in Wallonia by B. Beaumont (ISSeP)

Spatial disaggregation methods for fine-scale population mapping by E. Hallot (ISSeP)

Dynamic population mapping from mobile phone data by D. Jacques (ULB)

Multi-level modelling of Land Use and population dynamics by L. Poelmans (VITO)

Quantifying and monitoring urban sprawl in Flanders using the RuimteModel Vlaanderen by A. Pisman (Vlaamse Planbureau voor Omgeving, Departement Omgeving)

The urban component of the French Land Data and Service Centre (THEIA) by A. Puissant (Professor at UStrasbourg)

Modelling urban densification and expansion processes: a regional perspective by J. Teller (Professor at ULiège)

Please register via eventbrite:

<https://www.eventbrite.com/e/freely-accessible-seminar-on-earth-observation-and-population-modelling-for-monitoring-urbanization-tickets-51867859163>



Where?

Brussels Town Hall

Grand Place 1, 1000 Brussels

How to?

Train: Brussels central

Metro: Brussels Central/ Bourse

Parking: Grand Place Parking