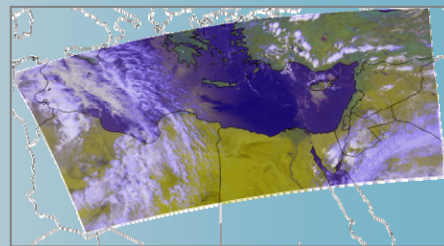
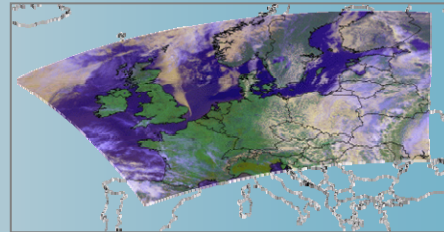


EPIDEMOIST

Improving epidemiological modelling
using satellite derived soil moisture proxies



BLUETONGUE



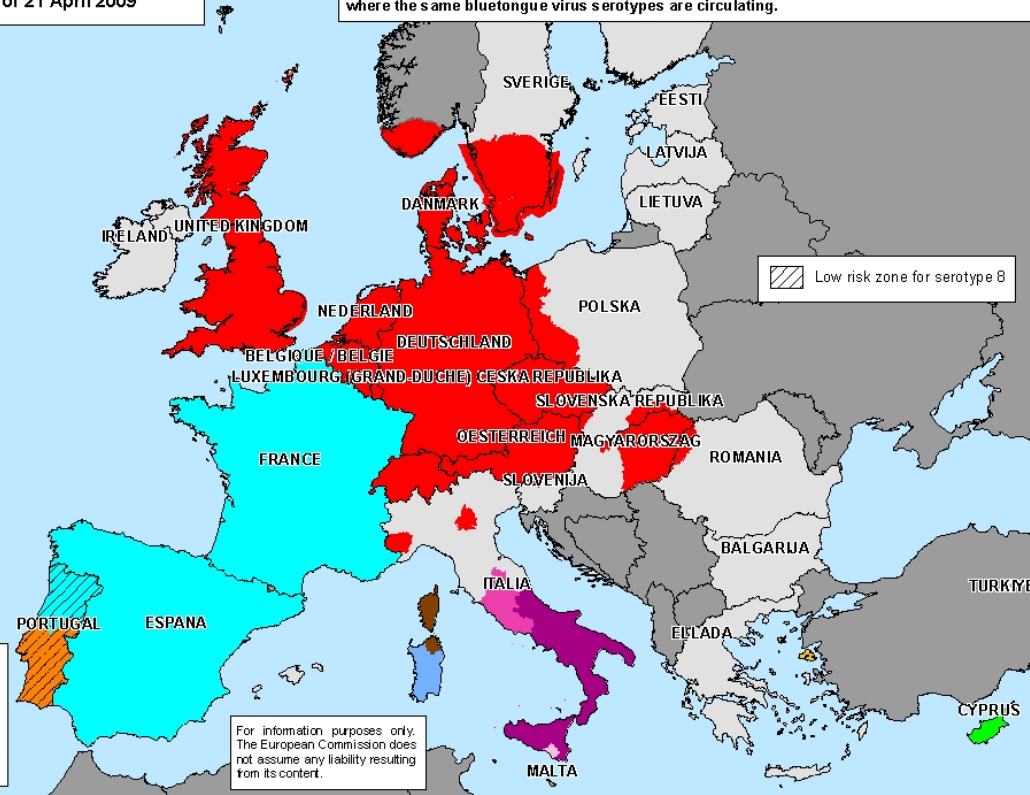
Bluetongue

Restricted zones* as of 21 April 2009

This map includes information on the bluetongue virus serotypes circulating in each restricted zone, which permits, for the purposes of Articles 7 and 8 of Regulation No 1266/2007, the identification of the restricted zones demarcated in different Member States where the same bluetongue virus serotypes are circulating.

Zone (serotypes)

- A (2,4,9,16)
- B (2,16)
- D (16)
- F (8)
- G (1,2,4,16)
- J (1)
- K (1,8)
- S (1,4,8)
- T (1,2,4,8,16)
- U (16,8)
- V (2,4,8,9,16)



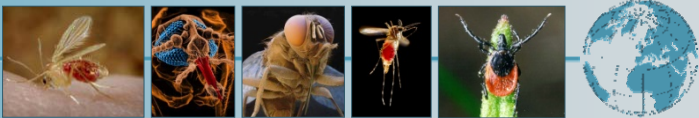
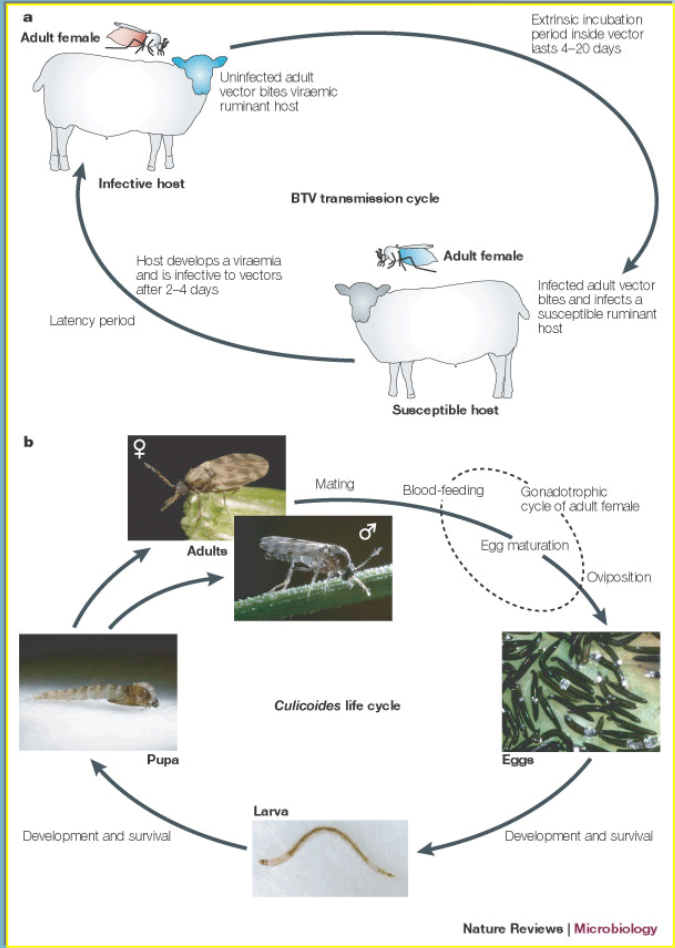
* as defined in Article 2 (d) of Commission Regulation No 1266/2007: geographic areas where surveillance and/or protection zones have been demarcated by the Member States in accordance with Article 8 of Council Directive 2000/75/EC.

For information purposes only. The European Commission does not assume any liability resulting from its content.

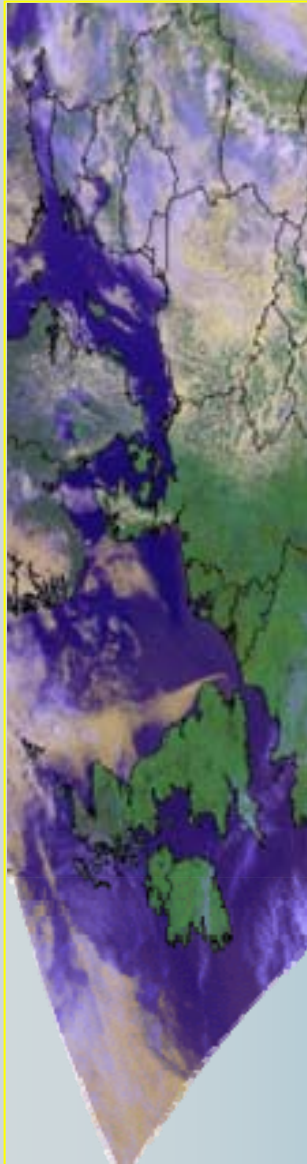




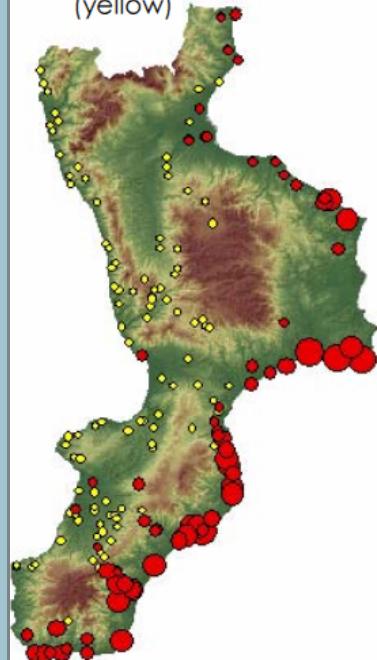
Culicoides



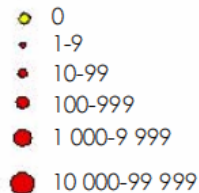
Model absence/presence



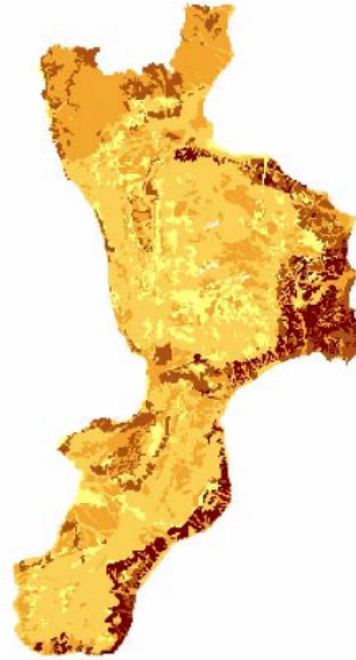
a) Sites found to be either positive (red) or negative (yellow)



Max. *Culicoides imicola* per site



b) Distribution of sandy and clay soils



- Soil moisture
- Machine learning

