

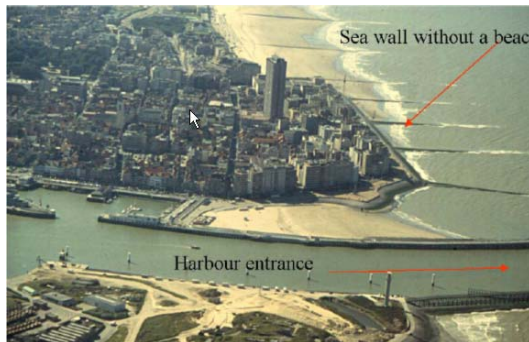
INSHORE



In the view of the ongoing sea-level rise,
beach nourishment is important to protect the hinterland

Coastal processes, especially erosive events, act over the continuum:

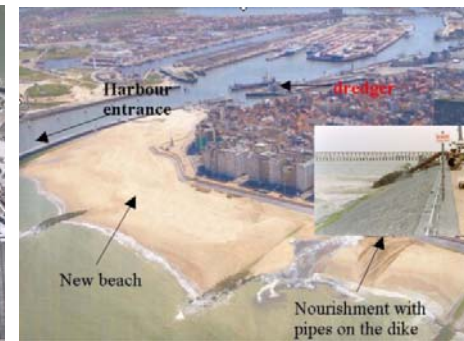
- Dunes
 - Beach (back- and fore shore)
 - Near shore
- } INSHORE



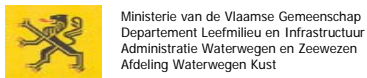
Aerial photo showing the beach of Oostende before 2004.



Animation showing the area within the city of Oostende which might possibly flood in case of dike failure.



Aerial photo showing the beach of Oostende after nourishment taking place in 2004 en 2005.

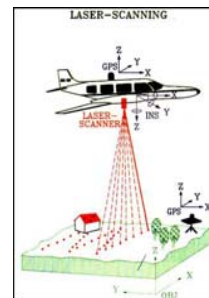
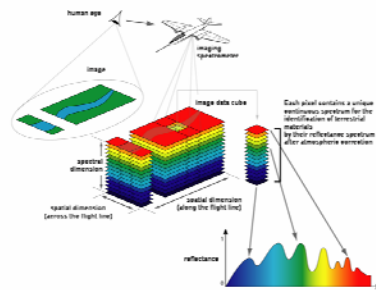


Observation of the coastal sediment budget is crucial is essential.
Mostly, studies are restricted to the beach.

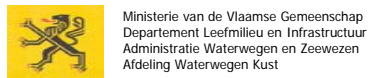
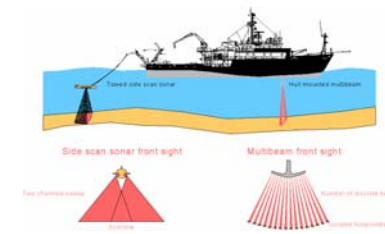
INSHORE



The objective of the project is to develop a methodology to produce an integrated sedimentological and morphological map over the inshore continuum which can also be applied in future studies



Source: TopScan, Germany



To collect the required data, an airborne hyperspectral and LiDAR survey and a seaborne single- and multibeam side-scan sonar acoustic survey are organized in summer 2009.