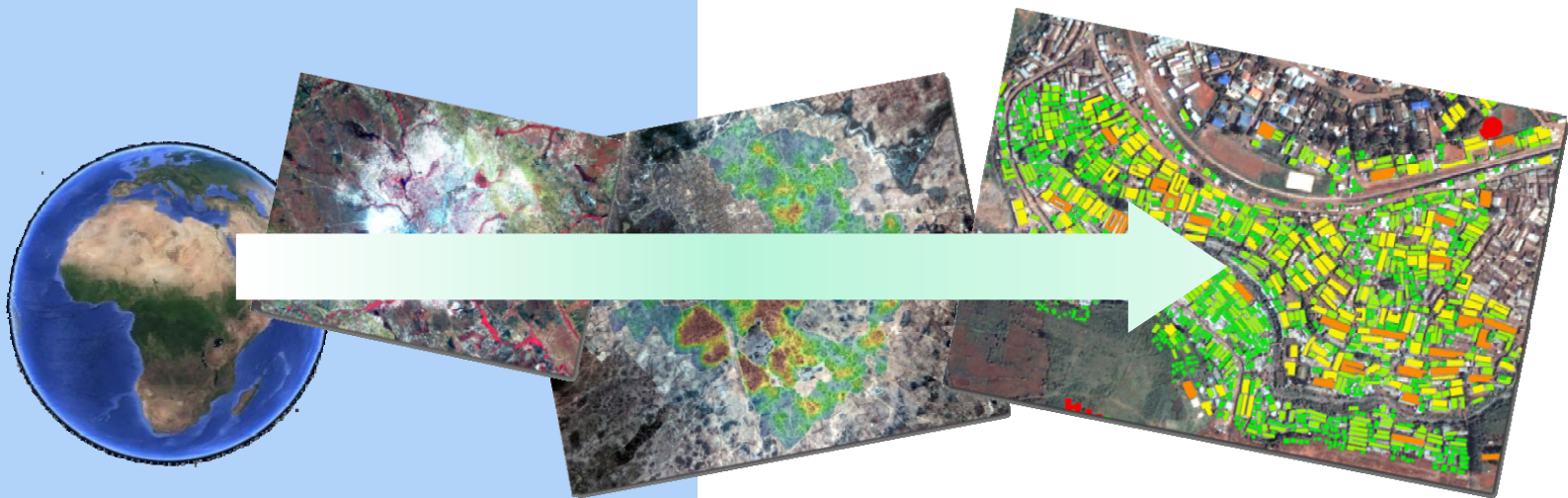


Keyobs : H. Hansen, E. Bonino, S. Taupin
ULB : E. Wolff, A. Sotiaux
ADRASS : L. Lohlé, A. Lambert

POPSATER



Potential use of remote sensing
for population estimate



ULB

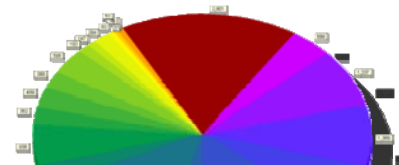
KEYOBS
Drawing the future

ADRASS
asbl

POPSATER



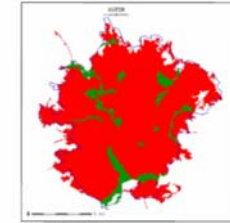
The project intends to develop innovative improved methods for population survey and assessment, targeting many development projects and relief programs mainly related to urban growth and population displacement.



7	Polygon	7	552677 560221	5526 885286	Donkey A					
8	Polygon	8	557523 599123	3653 734559	Muhanna					
9	Polygon	9	158918 4445108	2348 005452	Fonca-2					
10	Polygon	10	403721 617152	4257 830108	Limzathra					
11	Polygon	11	528498 781744	7818 54813	Muhanna					
12	Polygon	12	580295 875878	3837 185621	Dagana					
13	Polygon	13	365281 714268	4617 488655	Dalo					
14	Polygon	14	778627 436832	6152 241338	Abdulla					
15	Polygon	15	82492 955987	1137 015381	Abdulla	65	69	53	82	93
16	Polygon	16	108812 020239	7289 200706	Limseel	500	606	411	638	689
17	Polygon	17	747820 956634	3981 782345	Ime	1378	1415	1178	2124	2395
18	Polygon	18	163719 731041	1730 643749	Limzathra	435	441	382	547	595
19	Polygon	19	821721 120615	7739 452436	Limzathra	2001	1950	1811	2247	2560
20	Polygon	20	100204 148332	1368 578959	Abdulla	-127	-127	116	-291	284
21	Polygon	21	53570 697212	944 027854	Altum market	65	69	50	51	63

Improving built-up detection

- Non urban inclusions < 1 Km² are deleted
- External boundary smoothed



POPSATER



More specifically, we aim at developing methods to answer four questions:

- In the absence of census or between two censuses, what is the number of persons in an urban or a rural district?
- How to distribute population inside an urban or rural district or a geographical area without any correspondence with administrative boundaries?
- In the absence of census, what are the main characteristics of a rural or urban population?
- Can we extract socio-environmental information (on roads, water, infrastructures, existing settlements, cultivated areas ...) to help the relocation of displaced people (e.g. for large infrastructure projects)?

POPSATER



The methodologies developed in the POPSATER project intend to sketch standard procedures making it easier to design tailored sample surveys meant to answer specific questions from customers using remote sensing images.

The specific objective of the project is to identify, to test and to adapt methods of population estimates and its main characteristics (age, sex...) based on the remote sensing data; these methods will be transferred to the industrial partner in several geographical situations (urban or rural, concentrated or scattered) after validation on test sites.

POPSATER



KEYOBS s.a.

**Rue des Chasseurs Ardennais, 4
SPATIOPÔLE
4031 – Angleur – Liège
Belgium**

 **+32 (0)4 384 63 15**

 **+32 (0)4 384 62 15**

 **info@keyobs.com**

Eléonore Wolff, Alix Sotiaux

**Institut de Gestion de l'Environnement
et d'Aménagement du Territoire
Université Libre de Bruxelles, cp 246, 50
Avenue F.D. Roosevelt,
1050 Brussels, Belgium**

**L. Lohlé-Tart, A. Lambert
ADRASS**