

# The Kabar project

*Mapping of coral reefs using hyperspectral data;*

*a case study: Fordata, Tanimbar, Indonesia*

---



The Indonesian archipelago with its many coral species is called the 'centrum of biodiversity'.

→ biological richness & valuable socio-economic resources

Many threats are posing stress on coral reefs.

→ pollution, sedimentation and unsustainable fishing activities

---

Objectives: → monitoring system → efficient mapping

- provide information for decision making
  - protecting coral reef environments
- 



*L. Bertels, E. Knaeps, S. Sterckx, B. Deronde  
Flemish Institute for Technological Research (VITO), Belgium  
Tony Vanderstraete, Stijn Van Coillie, Rudi Goossens  
Geography Department, Ghent University, Belgium*



Belgian  
Science Policy

October 11, 2006

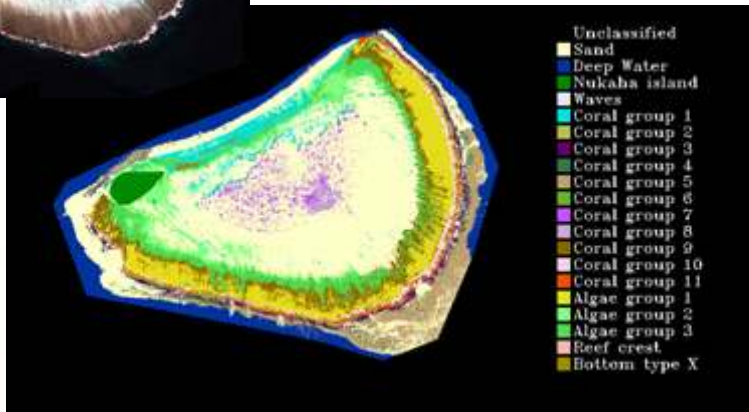
*AIS workshop, Bruges, Belgium, October 10, 2006*

September-1 2005

→ CASI-550 ; 30 bands ; 1 m

August-29 till September-10 2005 a field campaign

→ Collection of ground truth information



Standard pre-processing of the data

Sun glint & water column correction

Geomorphological classification

Benthic cover classification

Class labeling using field collected data

*The authors wish to thank the  
Belgian Science Policy Office  
for funding the Research Project and Field Campaign.*



Belgian  
Science Policy

October 11, 2006

AIS workshop, Bruges, Belgium, October 10, 2006