

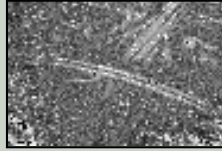
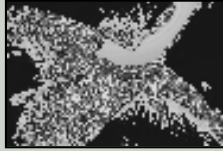
Gent - 24 oktober 2005



Geo-informatieprodukten ter ondersteuning van het stedelijke groenbeheer

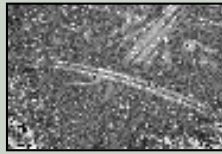
Tom Op 't Eyndt





SUGRES project

- Doelstelling:
 - In kaart brengen van relevante behoeftes - marktstudie
 - Ontwikkeling producten voor opvolging van stedelijk groen in de stedelijke omgeving
 - Marktontwikkeling
- Producten
 - Inventaris van stedelijk groen
 - In kaart brengen van levensvormen
 - Detectie van veranderingen
 - Opvolging van gezondheidstoestand van bomen



Partners

- Federaal Wetenschapsbeleid pre-operationeel project
- Privé partner
 - G.I.M. NV

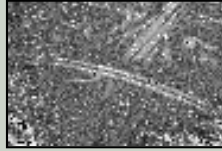
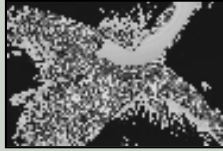


- Wetenschappelijke partners
 - ULB (IGEAT, Prof. Wolff)
 - VUB (CCG, Prof. Canters)
 - UCL (MILA/ENGE, Prof. Defourny)
 - UG (Geografie, Prof. Goossens)



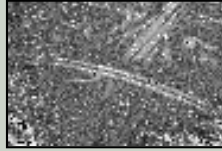
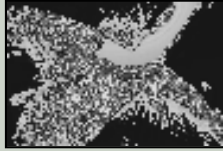
- Gebruikers
 - IBGE/BIM
 - Stad Gent





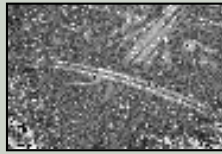
Geo-informatieprodukten

- Kleureninfrarode beeldmozaïek
- Groeninventaris + afgeleiden
- Bomenkadaster
- Gezondheidstoestand
- StreetGreen



CIR Beeldmozaïek

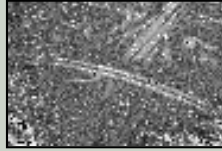
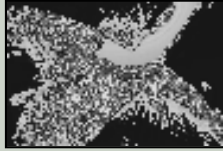
- Produkt
 - geometrisch correct
 - 1 meter ruimtelijk detail
 - groeiseizoenopname
 - schaal 1:5.000
- Belangrijkste voordeel
 - GIS compatibel
 - actuele basisinformatie



CIR Beeldmozaïek

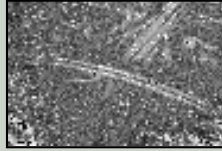
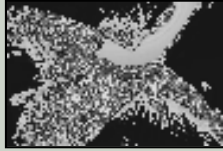


Includes material © European Space Imaging



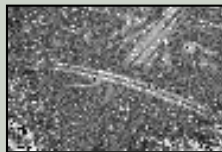
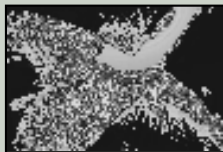
Groeninventaris

- Produkt
 - inventaris van alle groene elementen
 - minimum oppervlakte: 100 m²
 - 2 klassen: groen en niet-groen
- Belangrijkste voordeel
 - overzicht van de groeninfrastructuur (openbaar als privé)
 - duurzame stadsontwikkeling



Groeninventaris

- Afgeleide produkten
 - openbaar/privé-groen
 - structuurplanning
 - duurzaamheidsindicatoren
 - bv hoeveelheid groen in woongebieden

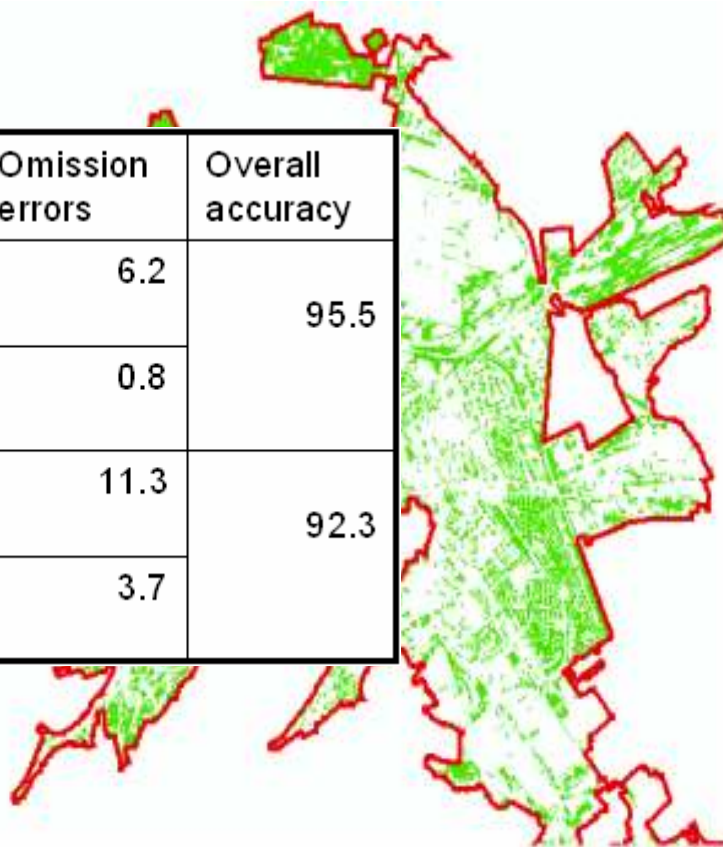


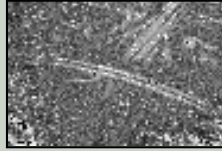
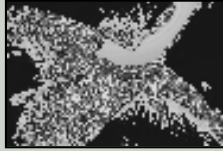
Groeninventaris

Brasov, Romania



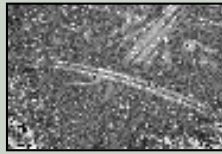
	Classes	Confusion errors	Omission errors	Overall accuracy
Brussels	Non-Green	0.4	6.2	95.5
	Green	12	0.8	
Ghent	Non-Green	3.5	11.3	92.3
	Green	11.7	3.7	





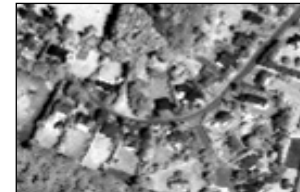
Groeninventarisveranderingen

- Produkt
 - flagging van verandering
- Belangrijke voordeel
 - versnellen en efficiënter maken van eigen updatemethodologie

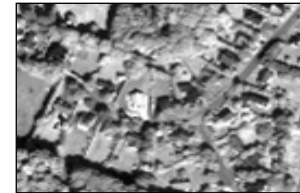


Groeninventaris indicatoren

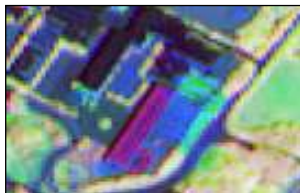
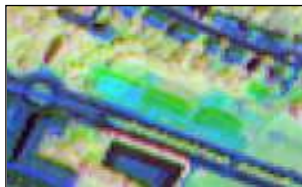
Panchromatic image 2000



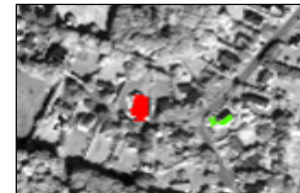
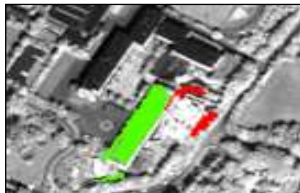
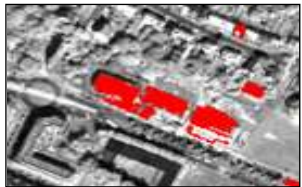
Panchromatic image 2003



Multitemporal color composite

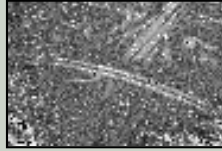
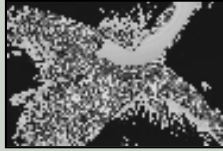


Change detection



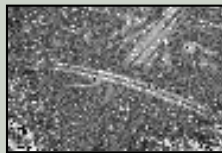
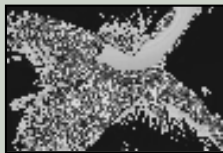
« Green => Non-green »

« Non-green => Green »



Bomenkadaster

- Produkt
 - ruimtelijke databank van (laan)bomen
 - puntenformaat
 - + attributen
- Belangrijkste voordeel
 - in kaart brengen van informatie
 - opname in een GIS
 - organisatie van het werk

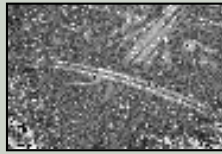


Bomenkadaster



FID	Shape	L_OND	ADRES	D_PLANT	SPECIES
0	Point	<Null>	Brialmontlei	<Null>	
1	Point	<Null>	Brialmontlei	<Null>	
2	Point	<Null>	Brialmontlei	<Null>	
3	Point	<Null>	Brialmontlei	<Null>	
4	Point	<Null>	Brialmontlei	<Null>	
5	Point	<Null>	Brialmontlei	<Null>	
6	Point	<Null>	Brialmontlei	<Null>	

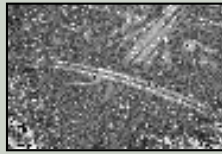
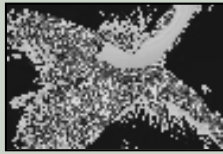
Record: 5 Show: All Selected Records (1 out of 147 Selected.) Options



Gezondheidstoestand

- Produkt
 - overzicht van mogelijke problemen
 - o.b.v locatie of straatnaam
 - = input voor veldwerk

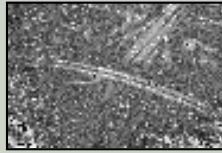
- Belangrijkste voordeel
 - kostenbesparing veldwerk
 - snelle actualisaties



Gezondheidstoestad

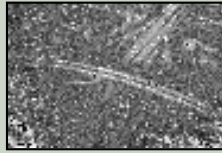
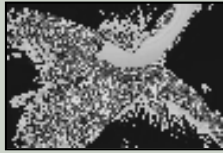
Park Brussel





Gezondheidstoestand

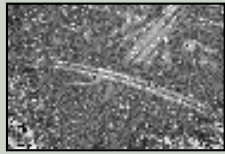




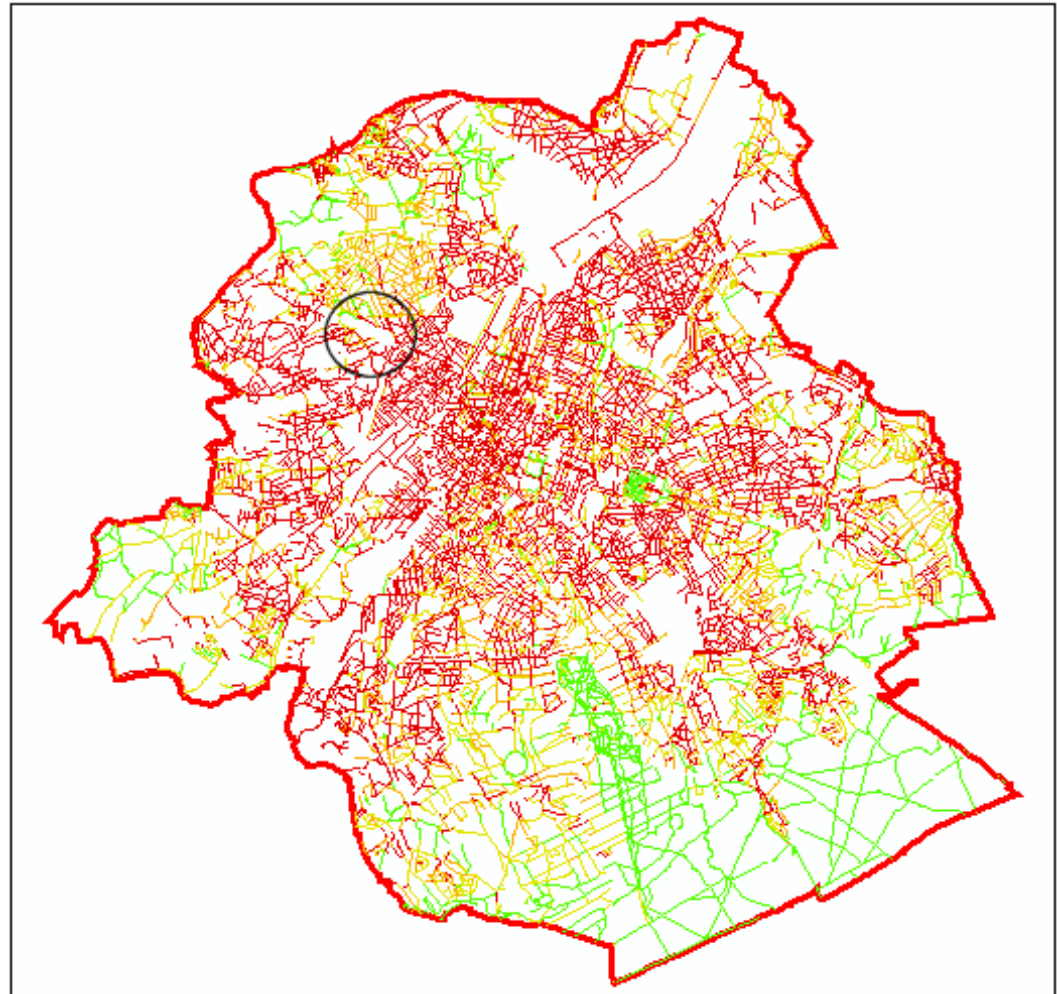
StreetGreen

- Produkt
 - indicatie van hoeveelheid groen per straat
 - thematische indeling

- Voordelen
 - aantrekkelijkheid woonomgeving
 - groenconnectiviteit ~ biodiversiteit

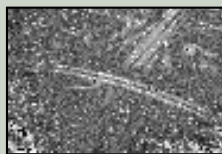
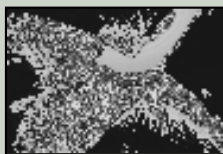


StreetGreen



© GIM

© GIM



Contact

G.I.M. - Geographic Information Management n.v.

Tom Op 't Eyndt

Interleuvenlaan 5

B-3001 Leuven

☎ 016/40 30 39

fax. 016/40 30 69

✉ tom.opteyndt@gim.be