



SCIENCE AND STORYTELLING:

**Transforming Earth Observation
Discoveries into Public Conversations**

Presented by:
Anthoni Tagarian
Paul Jhon Diezon
Nora Bao Ngoc Trieu

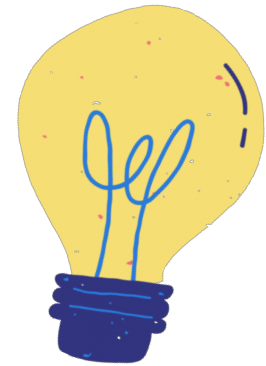
Science Communication and Outreach

Goal of the course

The course wants to stimulate reflection on the social meaning of science and the role of communication, information and popularization. In addition the course offers an introduction to the scientific literature and empirical studies on science communication. Finally the concrete process of science communication (communication media, typology of communication, communication sociology) is investigated.



Science Communication Project with STEREO



Putting some of STEREO's scientists into the limelight, by giving them the opportunity to explain their work and their passion.



Activities and Outcomes



Belgian Earth Observation
354 followers
1w · 🌐

Calling all **#EarthObservation** enthusiasts!

It's time for the **#STEREO** giveaway! Let's test your knowledge on earth observation by guessing 2 facts and 1 myth!

Put your answer in the comment below to win a prize of a guided tour to the facility site of **#ESEC** (the **European Space Agency - ESA's European Space Security and Education Centre**).

#STEREO BELSPO

1. Like this post and follow this account!
2. In the next slide, identify **TWO FACTS** and **ONE MYTH** from the three statements by dropping a comment below!
e.g. Fact b, c Myth a
3. Mention @ 3 of your friends along with your answer! Use **#stereo** **#belspo** hashtags. You can also add your own!
4. Share the post in your profile (post/story)!

- a. Earth observation can predict earthquakes.
- b. Remote sensing skills is transferable to other industries.
- c. No satellite can see through clouds.

with **European Space Agency - ESA** and 1 o.clouds.
It is announced on the 10th of May!

Paul Jhon Diezon and 14 others
12 comments · 8 reposts

Science Communication Project with STEREO

Learning Curves and Future Recommendation

- Accessibility and presentation of data
 - Open source and user-friendly interface
 - Gamification of data
 - Virtual reality
- Storytelling and citizen science
 - #CANrelate
 - Coupling with citizen science participation (re: gamification)
 - Training/Workshops
- Media representation and public engagement
 - Media outreach (mainstream and social)
 - Exposition





<https://youtu.be/FJnIRU1DUHQ?feature=shared>



What's next?

We will continue to do science communication

As **AnthropoScene**

SCAN ME



Humans of susdev



The image shows three women standing side-by-side, smiling. They are wearing white lab coats. The woman on the left is wearing a grey hijab and glasses, holding a small white capsule. The woman in the middle is wearing a black hijab and has long black hair. The woman on the right is wearing a brown hijab and is also holding a small white capsule. They are all looking towards the camera.

anthroposcene.official
và
millavenia.pr

anthroposcene.official [HUMANS OF SUSDEV 03]

Deciding to come back home after graduation is not an easy option; but the pandemic hit hard and considering the limited opportunities available that aligned with their education background, @millavenia.pr @elfirawahdalia and @estyuniar joined their local government-supported lab.

As a team of three, their research was to add more value to the local potential, that is snakehead fish. Esti explained, "There are a lot of snakehead fish farms in the peatland area in our region, it's the local delicacy and also traditional medicine, but the current consumption is still leaving parts of the fish to waste, we also want to make it into something valuable and zero-waste".

Their research has turned the snakehead fish into albumin capsules that are rich in collagen and protein, gelatin, fish oil, and fish meal that can be processed into various foods. Following the albumin capsules, they are now collaborating with another government agency to develop high-protein biscuit products to prevent stunting for children.

Despite support from the government, the team is still facing a lot of challenges. "We are from a hard-science background, and we still need a lot of help like in the product management and marketing department, but we are eager to learn" Mimi describes.

"In the future, we want the albumin capsules to be accessible for more people, especially people with diabetes, and we want to develop more added-value products not only from snakehead fish but other local potential" Elvira adds.

#HumansOfSusDev #Anthroposcene #Sustainability

👍 💬 📌

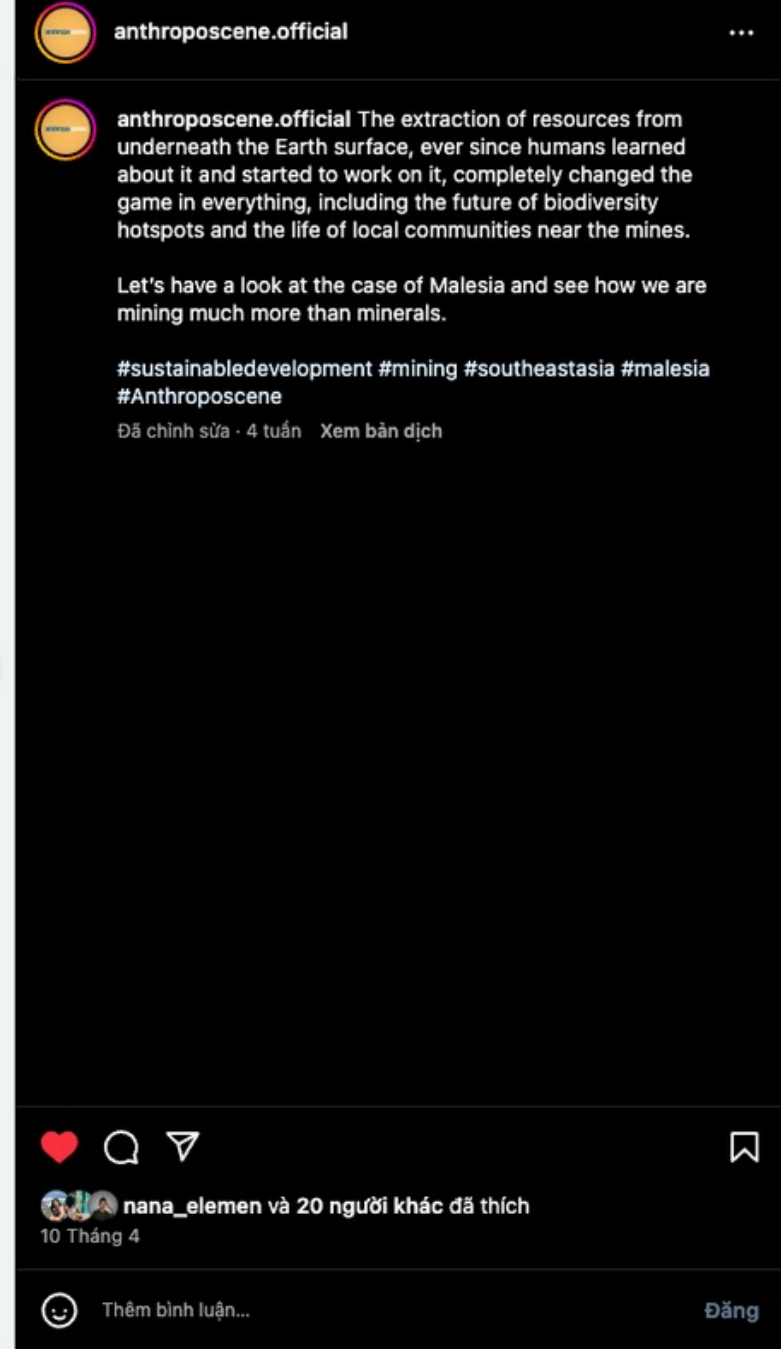
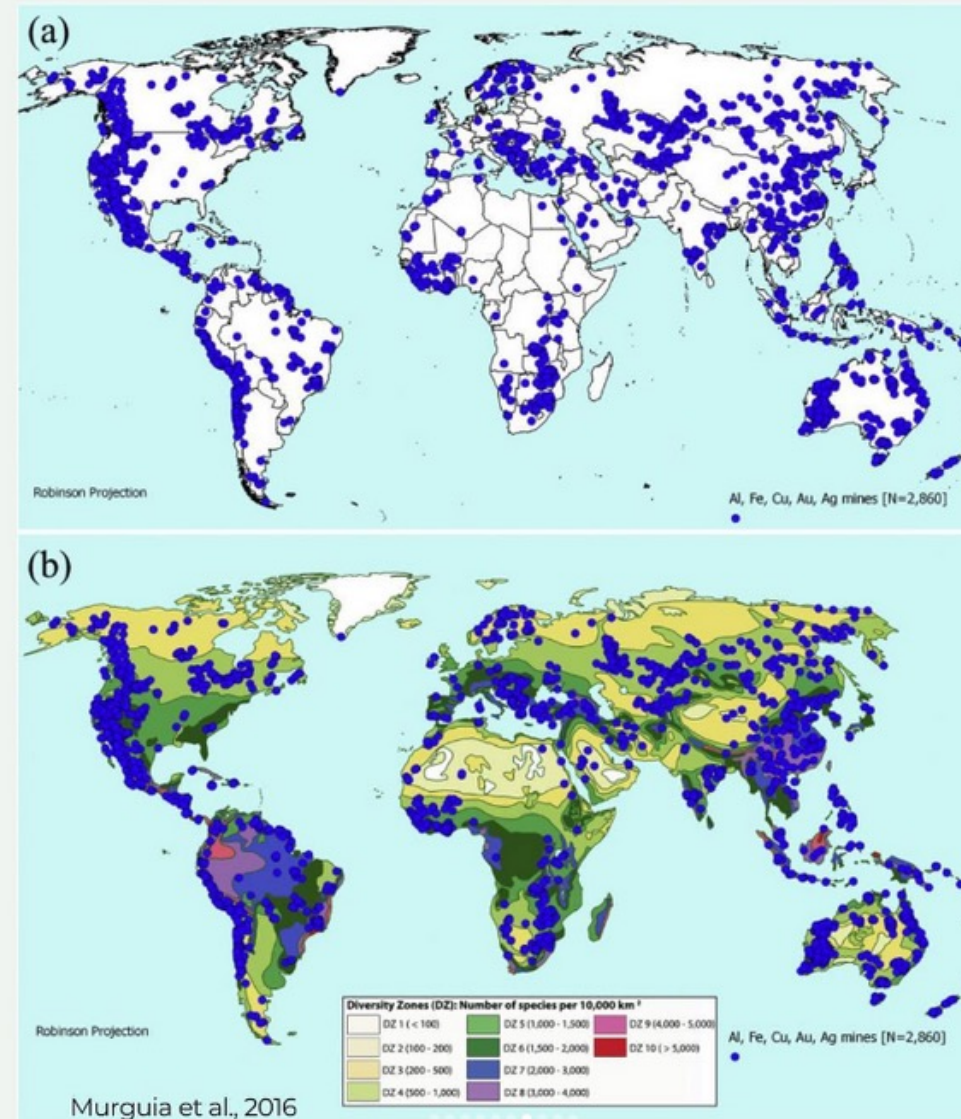
nana_elemen và 315 người khác đã thích

6 Tháng 4

Infographics



Alarminglly, the concentration of mining sites near or within areas of intermediate to high vascular plant biodiversity is **not limited to Malesia alone.**



AnthropoScene Collaboration Post

Narrating Ecological Grief and Hope:

A Reflection from the Mediterranean

Photo : Louna Dayekh

anthroposcene.official

anthroposcene.official [AnthropoScene Collabora
Climate change isn't merely a distant issue; it's a d
personal experience.

We currently face an era marked by unprecedented decline. Human activities are not only disrupting the conditions supporting life, but they're also driving t into a new geological era known as the Anthropoce we understand grief concerning human losses, we acknowledge grieving for losses in the natural worl intangible toll of climate change, including loss of t farmland, and homes deeply impacts people's way personal identity.

So, what is ecological grief? In literature it is define grief felt in relation to experienced or anticipated e losses, including the loss of species, ecosystems, a meaningful landscapes due to acute or chronic env change*.

Grief manifests in various ways and varies among i and cultures. It is a natural reaction to separation o involving various emotions like yearning and bitter changes in thinking such as dwelling on the loss, a behaviors like withdrawing from social activities. W understand grief concerning human losses, we selc acknowledge grieving for losses in the natural worl

Rami/Fisherman (not his real name), is a resident o who carries on the cherished tradition of fishing, p through his family for generations. Though not his profession, this deep connection to the sea resona interviewer, @lunadayekh , who also shares unders the rhythms and moods of the Mediterranean, havi up alongside its waters in Lebanon.

👍🗨️📌

nana_elemen và 17 người khác đã thích
5 ngày trước

😊 Thêm bình luận...



anthroposcene.official

anthroposcene.official [AnthropoScene Collabora
As spring has been around and summer will come e us must be planning lots and lots of good time on v And they are sustainable, eco-friendly kind of vaca are they?

Before booking anything for June-July, join us for s for thought, then perhaps re-think some of your va options.

Content provided by @baongoc.pptx
3 ngày Xem bản dịch

pau_moralesr Very interesting post 🍌
3 ngày 2 lượt thích Trả lời Xem bản dịch

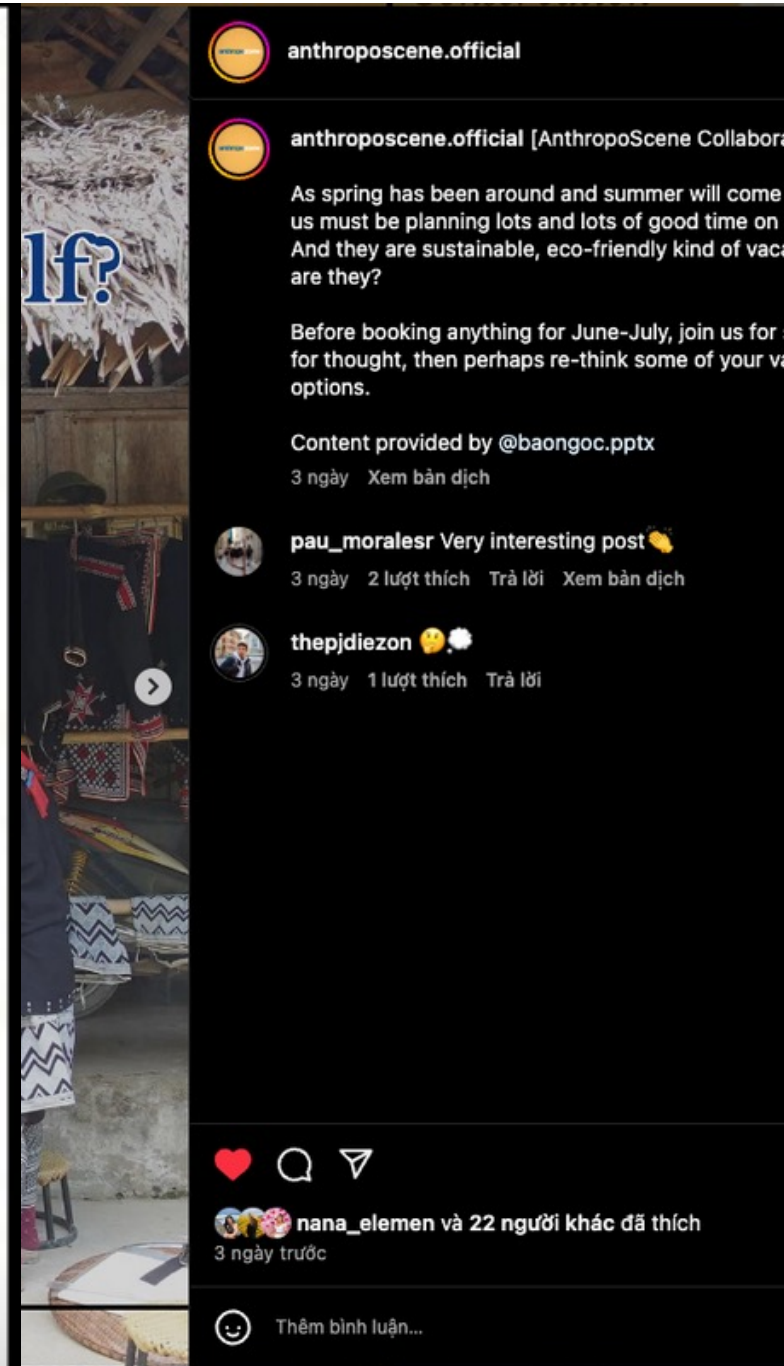
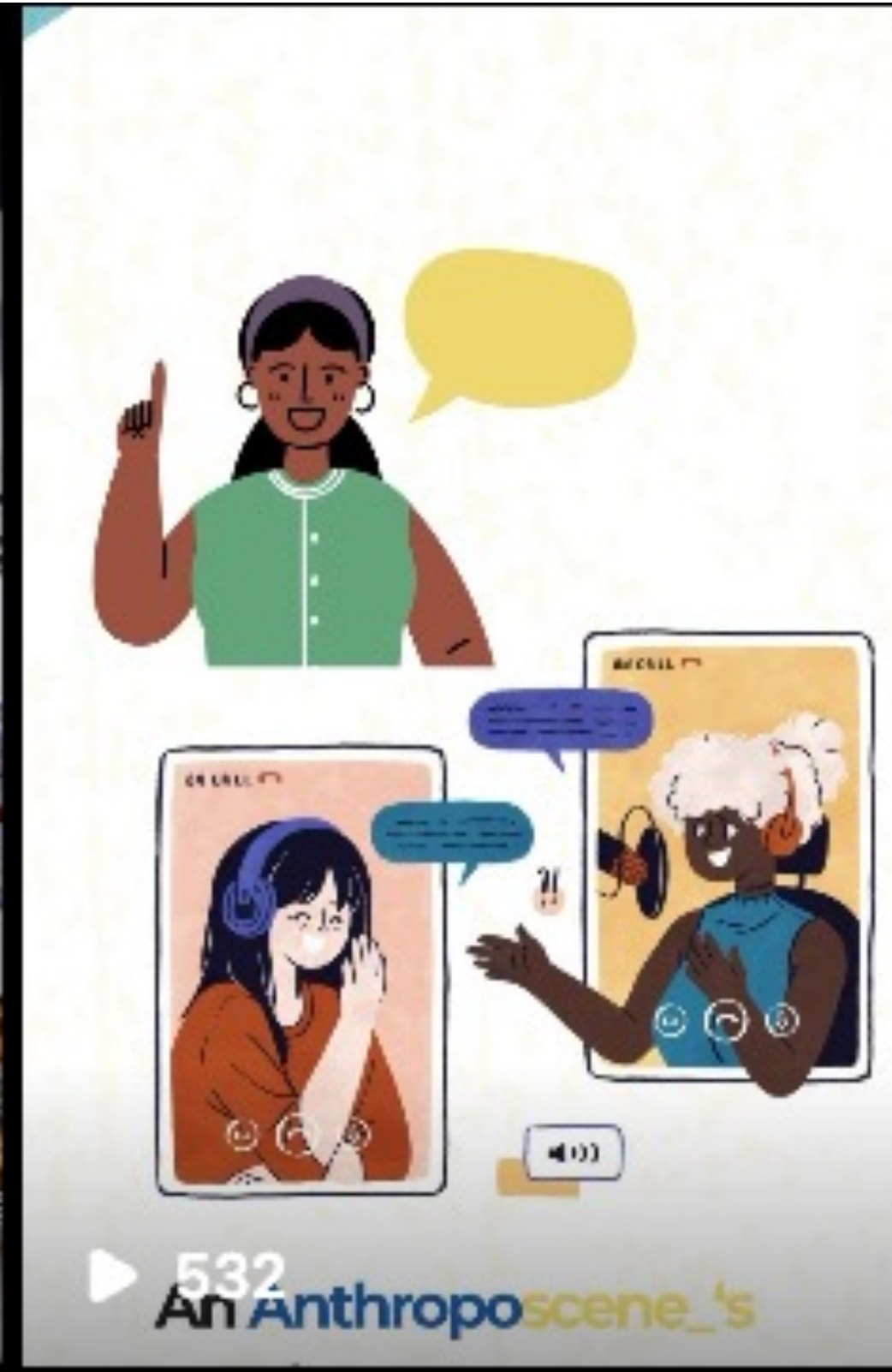
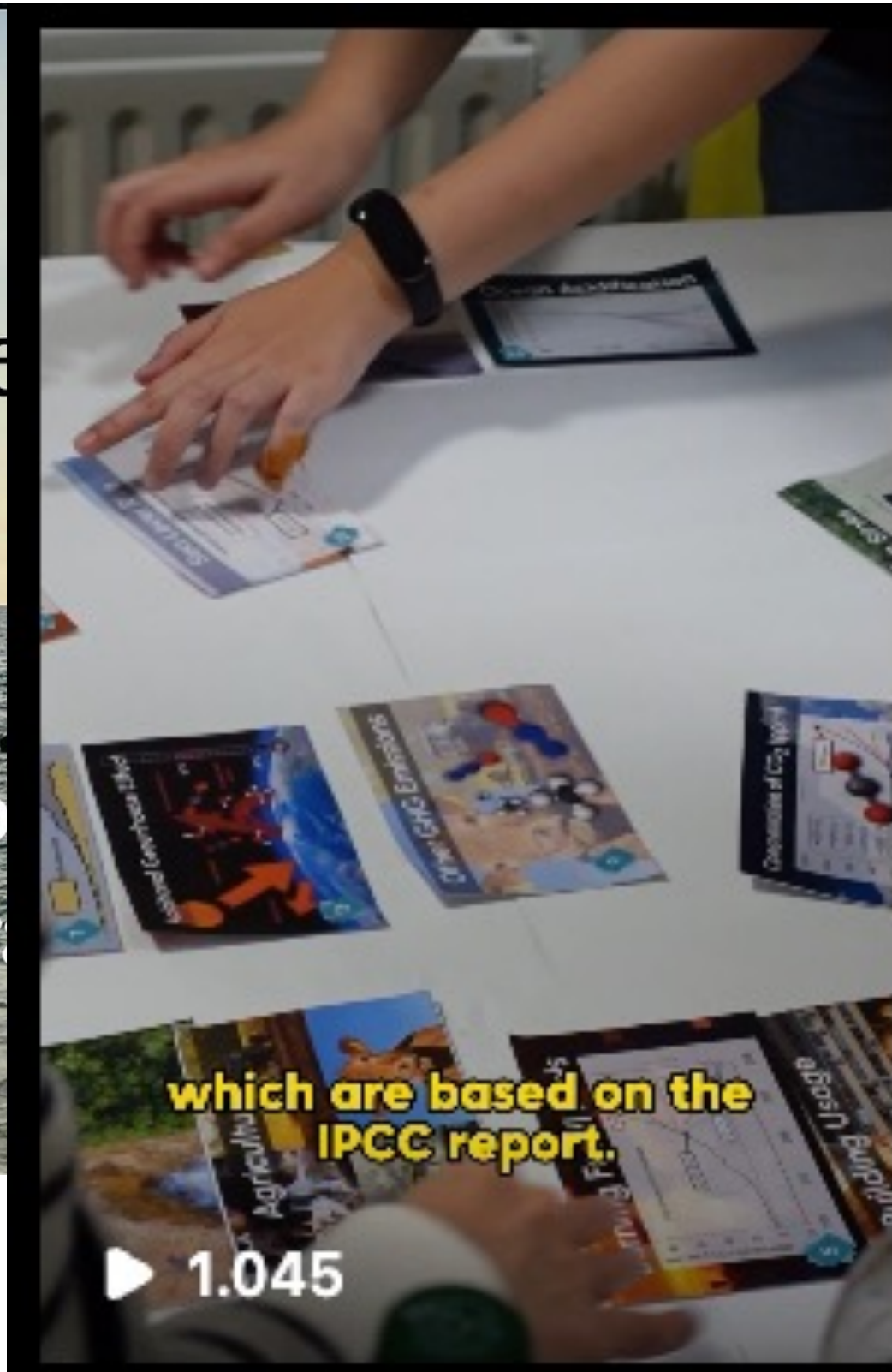
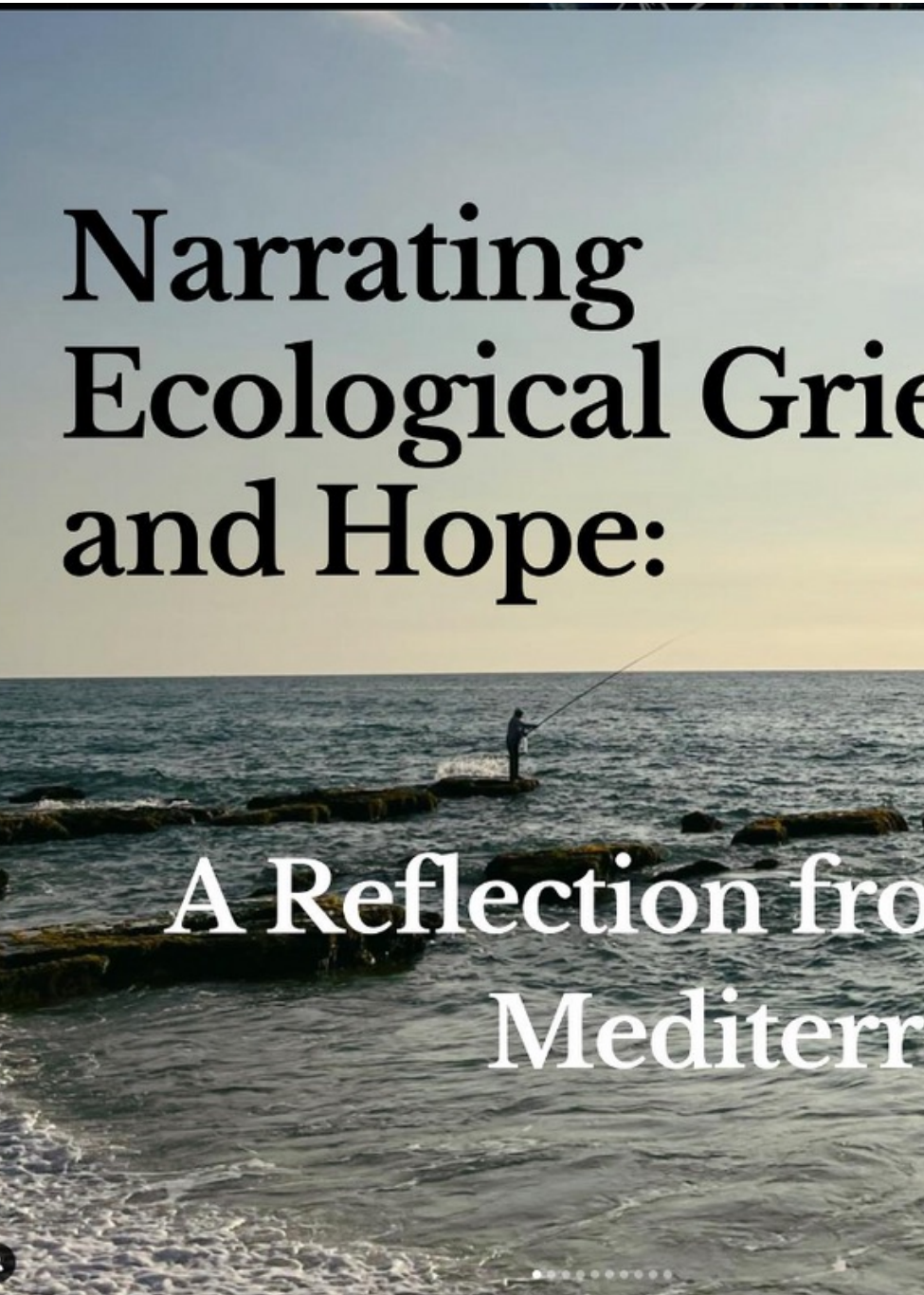
thepjdiezon 🍌🍌
3 ngày 1 lượt thích Trả lời

👍🗨️📌

nana_elemen và 22 người khác đã thích
3 ngày trước

😊 Thêm bình luận...

AnthropoScene Collaboration Post



THANK YOU FOR YOUR ATTENTION!

